

**Interface Control Document**  
for the  
Student and Exchange Visitor Information System

November 21, 2001

## **TABLE OF CONTENTS**

<b>1. INTRODUCTION</b> .....	<b>1</b>
1.1 Purpose .....	1
1.2 Scope.....	1
1.3 System Description.....	1
1.3.1 SEVIS Interactive System .....	1
1.3.2 SEVIS Batch Interface.....	1
1.4 Points of Contact.....	2
1.5 Document References.....	3
1.6 Glossary .....	3
<b>2. DESCRIPTION</b> .....	<b>4</b>
2.1 System Overviews .....	4
2.1.1 SEVIS Batch Interface Overview .....	5
2.2 Functional Allocation .....	5
2.3 Data Transfer .....	8
2.4 Transactions.....	10
2.4.1 Create/Update Student and/or EV Data .....	10
2.4.2 Generate Eligibility Document .....	10
2.4.3 Download Student and/or EV Data .....	11
2.5 Security and Integrity .....	11
<b>3 DETAILED INTERFACE SPECIFICATIONS</b> .....	<b>13</b>
3.1 SEVIS Batch Interface Specifications.....	13
3.1.1 SEVIS Batch Interface Processing Time Specifications .....	13
3.1.2 SEVIS Batch Interface Specifications .....	13
3.1.3 SEVIS Batch Interface Communication Methods .....	22
3.1.4 SEVIS Batch Interface Security Specifications.....	23
<b>4 APPENDICES</b> .....	<b>24</b>
4.1 Glossary .....	24
4.2 Result Codes .....	25
4.3 Standard Data Tables.....	26
4.4 Sample SEVIS XML File for Upload.....	53
4.5 Sample SEVIS XML File for Download.....	55
4.6 HTTP Request Parameters.....	58

## **EXHIBITS**

Exhibit 1–1: User System and SEVIS Interaction .....	2
Exhibit 1–2: Points of Contact .....	2
Exhibit 1-3: Document References .....	3
Exhibit 2–1: SEVIS Batch Process Overview .....	5
Exhibit 2–2: SEVIS Batch Interface Processes .....	5
Exhibit 2–3: SEVIS Batch Supported Requests .....	7
Exhibit 2–4: SEVIS Batch Download Transmission .....	7
Exhibit 2–5: SEVIS Batch Process .....	8
Exhibit 2–6: SEVIS Batch Data Transfer Process .....	9
Exhibit 2–7: SEVIS Batch Upload .....	10
Exhibit 2–8: SEVIS Batch Download for Print & Transaction Log .....	11
Exhibit 2–9: SEVIS Batch Interface Data Transmission Security .....	12
Exhibit 2–10: Data Encryption Using SSL .....	12

## **1. INTRODUCTION**

This Interface Control Document specifies the batch interface between the Student and Exchange Visitor Information System (SEVIS) and user interface systems, (User Systems) that are either third party vendor products or schools/program sponsors' in-house products that collect and maintain foreign students' and exchange visitors' information.

### **1.1 Purpose**

The purpose of SEVIS is the facilitation of timely reporting and monitoring of international students and exchange visitors in the United States. Based on the system requirements, SEVIS will be an Internet-based application for electronically tracking, screening, and reporting on foreign students and exchange visitors to the United States. SEVIS will enable schools and program sponsors to transmit electronic event notifications to the Immigration and Naturalization Service (INS) and Department of State (DoS) throughout a student's or exchange visitor's program in the US. Government agencies will be informed of status changes for international students and exchange visitors including admission at the port of entry (POE), program extensions, employment notifications, and changes in program of study.

### **1.2 Scope**

The scope of SEVIS entails the range of activities associated with the capture of data surrounding student and exchange visitor pre-arrival activities, physical arrival, status while in the US, changes in status, and physical departure and the communication of that data with other governmental applications.

### **1.3 System Description**

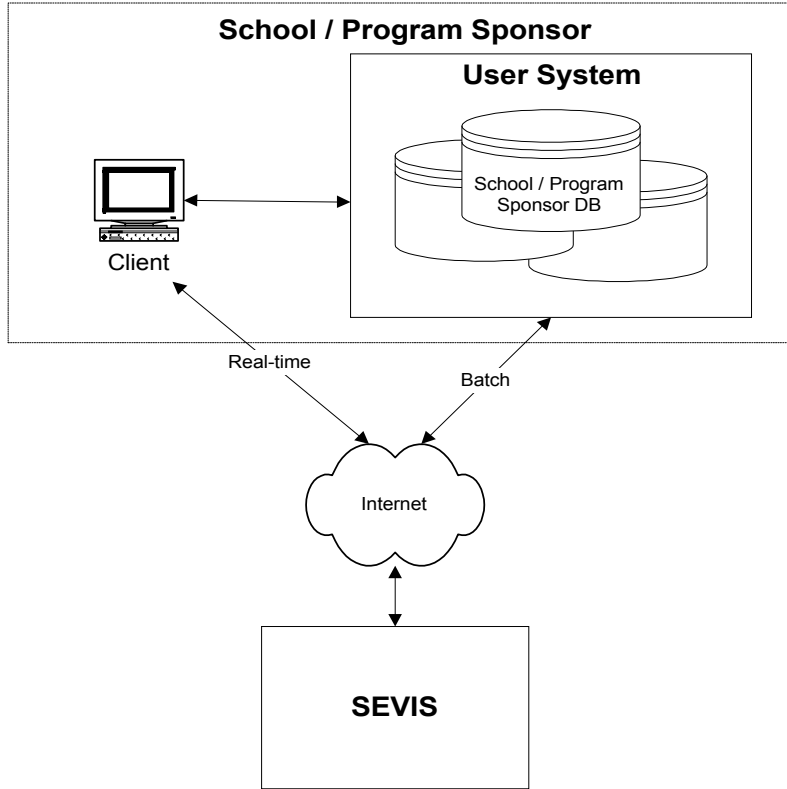
#### **1.3.1 SEVIS Interactive System**

The first method of exchanging data with the schools and program sponsors is a real-time data exchange over the Internet. The users from the authorized institutions interface with SEVIS directly to perform data exchange processes. These institutions will not need a specialized system to participate in the data exchange.

#### **1.3.2 SEVIS Batch Interface**

The second method of exchanging data with the schools and program sponsors involves a batch data exchange process. The batch interfacing systems, referred to as User Systems in this document, are either third party vendor products or schools/program sponsors' in-house products that collect and maintain foreign students' and exchange visitors' information. These User Systems interface with SEVIS and perform two-way data communication that would be transparent to the end user. This interface is illustrated in Exhibit 1-1.

**Exhibit 1–1: User System and SEVIS Interaction**



**1.4 Points of Contact**

Exhibit 1–2, Points of Contact, provides the organization name and title of the key points of contact for the SEVIS effort.

**Exhibit 1–2: Points of Contact**

Name	Role
Thomas Cook	INS Program Sponsor
Vicki Rose	Department of State Program Sponsor
Paul Arthur	INS OIRM Technical Manager
John Smith	SEVP Division Manager

## 1.5 Document References

### Exhibit 1-3: Document References

<b>CM Number</b>	<b>Document Title</b>	<b>Document Date</b>
CFY00.90059-00.F*0	System Development Life Cycle Manual, Version 5.0	10/27/2000
CSY00.10002-01.F*0	Functional Requirements Document (FRD) for the Student and Exchange Visitor Information System	08/16/2001
CSY00.10002-02.D*0	Requirements Traceability Matrix (RTM) for the Student and Exchange Visitor Information System	08/21/2001
CSY00.20001-00.W*0	System Design Document for the Student and Exchange Visitor Information System	(TBD)
CSY00.30004-00.UA0	Configuration Management Plan for CIPRIS National System	05/20/1999
CSY00.3.0022-00.W*0	Project Plan for the Student and Exchange Visitor Information System	(TBD)
CSY00.90005-00.F*0	Concept of Operations for the CIPRIS National System	10/06/2000

## 1.6 Glossary

Section 4.1, Glossary, contains a list of acronyms used in this document. Also, a standard list of data is provided.

## **2. DESCRIPTION**

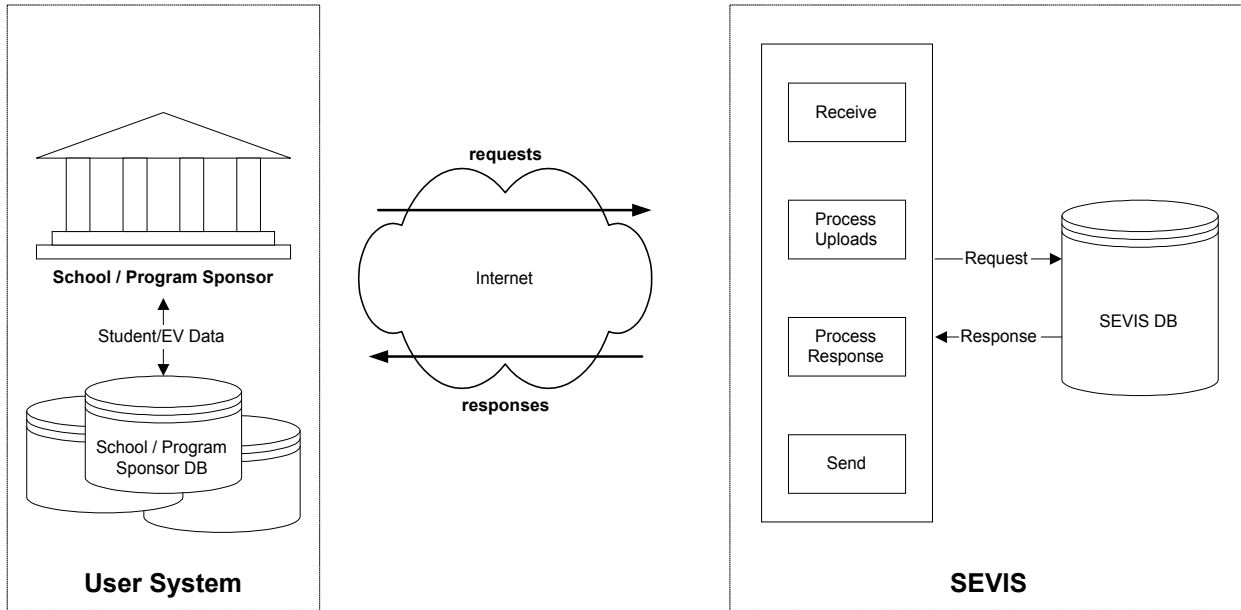
The interface between SEVIS and User Systems is a two-way communication interface performed in batch mode over the Internet. The interface permits users to view student and exchange visitor data and print eligibility documents. User Systems, including proprietary systems installed in some campuses or institutions may have student and exchange visitor records in a central database or stored in various local databases across the campus/institution. The interface between SEVIS and the User Systems provides a mechanism where data can be formatted.

### **2.1 System Overviews**

The SEVIS and User System interface entails a series of requests and responses, providing the User Systems with the ability to upload student and exchange visitor data to SEVIS in XML (eXtensible Markup Language) format. SEVIS is responsible for collecting, organizing and reporting on all student and exchange visitor data for the INS and DoS. The User System collects student and exchange visitor data at the institutional level and provides that information to SEVIS, which is stored in a centrally located database. The User System would be able to send to SEVIS all new and/or updated student and exchange visitor data that needs to be processed. All data elements must be transmitted to the INS SEVIS within 24 hours of entry or update into the User System. SEVIS receives each upload and generates a set of validation data along with data required for the printing of the forms. The user can access this data within 24 hours by reconnecting to the SEVIS Batch Interface and requesting the current download. This request may be performed at anytime within 1 week (24 hrs x 7) from the time the last upload was made.

The SEVIS Batch Interface is an Internet-based system that relies on HTTP (HyperText Transfer Protocol) communication as a basis for its request-response mechanisms. The file transferred is formatted according to XML (eXtensible Markup Language), a language that is commonly used in data exchange interfaces. The complete specification is detailed later in this document. An illustration representing a batch process communication between the User System and SEVIS is shown in the exhibit 2-1.

**Exhibit 2–1: SEVIS Batch Process Overview**



**2.1.1 SEVIS Batch Interface Overview**

The SEVIS batch interface requires three-core functionality support from both the User System and SEVIS. The three high-level functions are generating and sending of XML files; receiving XML files and validation results; and parsing and processing XML files. The SEVIS batch interface relies on XML technologies to carry out its back-end operations. All data transmitted through the system adhere to XML specifications.

The key hardware and software components identified for the client test environment are:

- Laser-Quality Printer (Minimum Resolution of 600x600 dpi)
- PDF Merging Tool or Equivalent Code
- XML Parser (or equivalent code)
- School or Program Sponsor-Provided Hardware

**2.2 Functional Allocation**

The basic operations that would be performed by SEVIS and the User Systems during the data exchange are as follows:

**Exhibit 2–2: SEVIS Batch Interface Processes**

Process
Create Student or EV
Update Student or EV
Download Student or EV Data and Image



SEVIS first authenticates and verifies the School/Program Sponsor's information prior to any processing or transfer of data. Once SEVIS verifies the identity of the institution, it then processes the data forwarded by the institutions. Appropriate messages and warnings get communicated back to the User System via transaction logs. This includes the validity of the request, data content, data format, and data semantics. The generated transaction log, in XML format, helps the school/program sponsor make any corrections. The corrected data would then be resubmitted to SEVIS. The breakdown of functions for the User System and SEVIS are described below.

SEVIS provides the following functions for the Batch Interface:

- Provides a connection for uploading Batch Interface data
- Generates acknowledgement indicating that file received passed initial check
- Schedules the file for processing
- Processes and stores data
- Generates transaction log
- Generates eligibility document data and barcode image

The User System shall provide the following:













- Process new and updated student or exchange visitor records and format this data according to the specified SEVIS Batch Document Type Definition (DTD). Each record should be marked as being sent to SEVIS. SEVIS will not accept duplicate transmissions of the same record or update. However, SEVIS does accept retransmissions of records that were incorrect.
- Accept data in XML format from SEVIS and associate XML data tags with form elements in the PDF form template for printing the forms. Also, each bar code in the bar code file is linked to the form by its SEVIS identifier. Note that it also possible for the user to connect to the Interactive SEVIS system and generate these forms on request.
- Parse XML file and store SEVIS identifiers in the User System, since they are required for later updates.
- Process error transactions by marking records that were unsuccessfully processed in SEVIS for later retransmission. Correct these records and mark them for the next transmission. (SEVIS Error Codes are provided in Section 4-2.)

The User System interface shall be given access to the SEVIS Batch Interface after meeting the following requirements:

- Digital certificate granted by an INS-approved (Verisign) certificate authority
- Passing the Interface Acceptance Test
- Organization must be certified by INS or designated by the Department of State

The SEVIS batch interface supports three types of functional processes. Exhibit 2-3, SEVIS Batch Supported Request, lists the types of requests supported by the SEVIS Batch Interface. The Create Student/EV and Update Student/EV processes can accept requests to print Eligibility Documents using a flag that will be present in the XML specification, defined in section 3. The SEVIS Batch Interface only serves print requests for those records that are processed through this interface at the time of processing.

**Exhibit 2–3: SEVIS Batch Supported Requests**

Request	Upload?	Format	Download?	Format
Create Student Data		XML		
Update Student Data		XML		
Create EV Data		XML		
Update EV Data		XML		
Create Student Data + Print Eligibility Document		XML		XML, Image, PDF
Update Student Data + Print Eligibility Document		XML		XML, Image, PDF
Create EV Data + Print Eligibility Document		XML		XML, Image, PDF
Update EV Data + Print Eligibility Document		XML		XML, Image, PDF

When the download file is requested, the user must again make this request through a system connection. The download transmission will include SEVIS confirmations on the processing results along with the files that are necessary to print the forms. The following shows the sequence of information that is transmitted as part of the download.

**Exhibit 2–4: SEVIS Batch Download Transmission**

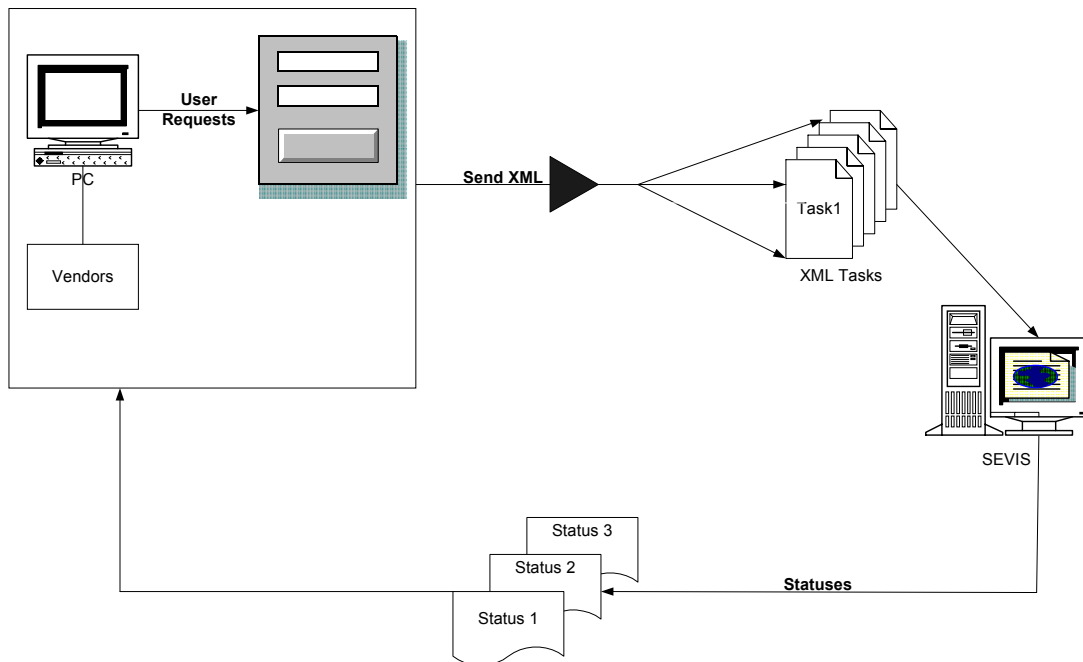
Download	Format
Form Image Templates	PDF
Transaction Data: <ul style="list-style-type: none"> <li>• Data for printing</li> <li>• Transaction Log</li> </ul>	Text File in XML format
Bar Code Image File	JPEG

Note that images cannot be stored directly in XML format. They must be stored externally and linked to the XML file.

## 2.3 Data Transfer

Data transfer for the batch process involves three main functions: Creation of the XML Batch File, passing the tasks contained in these batches to SEVIS for processing, and returning the status of the tasks. Exhibit 2-5, SEVIS Batch Process, illustrates these functions.

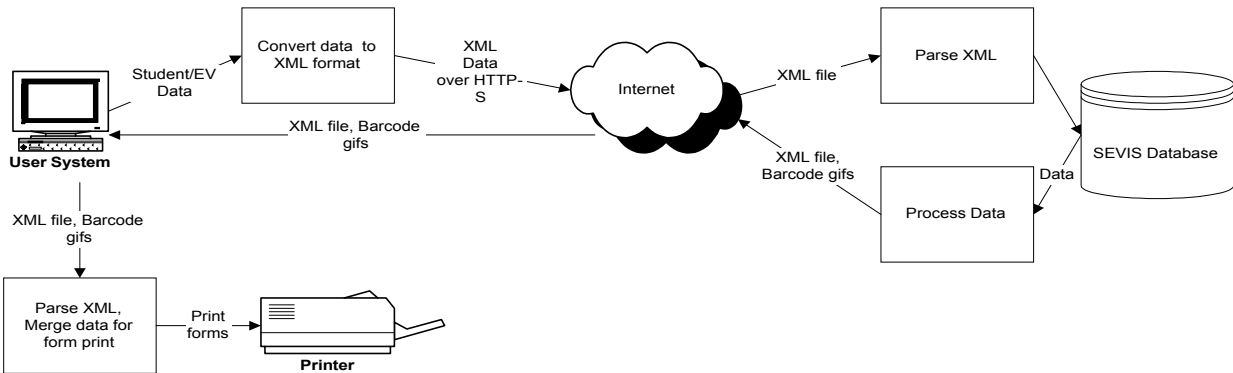
**Exhibit 2-5: SEVIS Batch Process**



The User System performs data transfer by converting data into XML format and initiating a connection through HTTPS (Hypertext Transfer Protocol Secure) protocol. When SEVIS receives the file, it is automatically validated according to the SEVIS batch specification. Once it passes the validation stage, the file gets parsed using an XML parser and undergoes further validation before the data is copied to the SEVIS database. If the file processed requires printing of eligibility forms, SEVIS generates XML document based on the necessary semantics information. SEVIS then generates PDF-417 barcodes into JPEG images. The SEVIS processed

output files get downloaded when the User System requests a data transfer, as illustrated in Exhibit 2-6, SEVIS Batch Data Transfer Process.

### **Exhibit 2–6: SEVIS Batch Data Transfer Process**



The data transfer from the User System to SEVIS requires the following steps:

- Data to be uploaded to SEVIS is generated in XML format
- Send upload by invoking the HTTPS protocol to communicate

SEVIS performs the following once the data has been received:

- Receives the XML file, performs syntax validation
- Parses XML file, performs context validation
- Processes data, performs business rules validation
- Generate barcode and XML files for download
- Stores data to persistency layer

The data transfer from SEVIS to the User System requires the following steps:

- Data to be sent back is generated in XML format
- Perform download when User requests through HTTPS protocol

After the data has been received, the User System is responsible for the following:

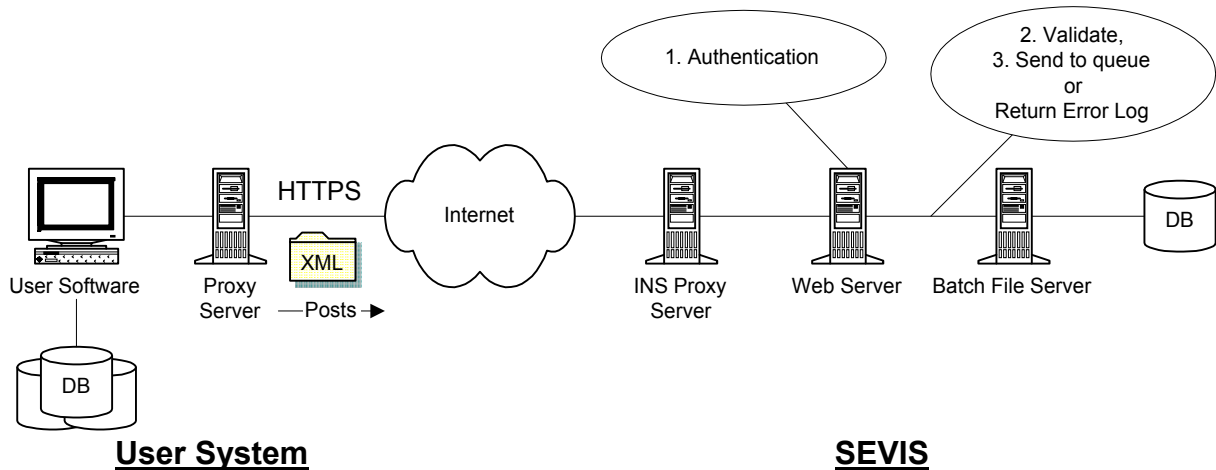
- Parse XML file and record SEVIS id numbers in User System
- Parse error records and correct data errors for retransmission on the next batch
- Merge barcodes and XML data into PDF template
- Print the merged eligibility document

## 2.4 Transactions

### 2.4.1 Create/Update Student and/or EV Data

The User System performs two separate operations to create or update student and/or EV data. The user system must first connect and authenticate with SEVIS via HTTPS. Once authentication is confirmed, the user system may proceed with uploading student and exchange visitor data. Within 24 hours of the time that the file has been received, it is processed and a download file is generated. The User System can request this file by logging in and requesting current outstanding download file or files. Exhibit 2-7, SEVIS Batch Upload, depicts the uploading process:

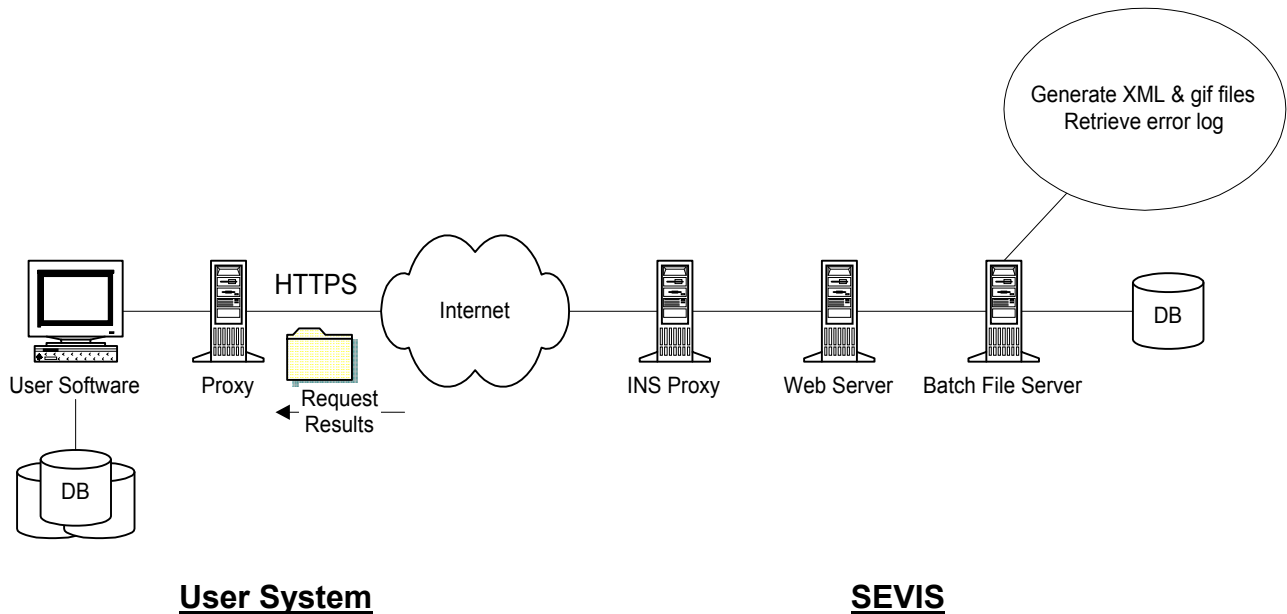
**Exhibit 2-7: SEVIS Batch Upload**



### 2.4.2 Generate Eligibility Document

The user creates eligibility records by uploading their XML formatted file to the SEVIS Batch Interface. This data can now be printed by requesting a download. All new records are downloaded automatically. Any updated records which need to be printed must be marked for selection (by the Print\_Req flag) so that they may be included in the download also. The download file contains the data that is merged with the eligibility document template. It is the responsibility of the user system to print these documents. Exhibit 2-8, SEVIS Batch Download for Printing and Transaction Log, depicts the processing and downloading process.

## Exhibit 2–8: SEVIS Batch Download for Print & Transaction Log



### 2.4.3 Download Student and/or EV Data

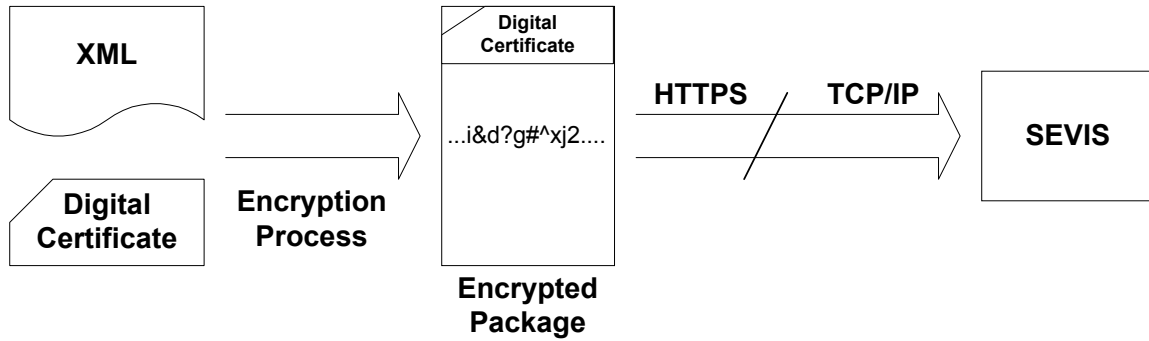
The user initiates the download process by performing a reconnection to the SEVIS Batch Interface as they would connect to any web site. After the user logs in, their identity is established and their data is collected for transmittal. The download includes the form templates, the XML data, and the bar code data. Section 4.5 shows a sample of the download XML data and Section 4.6 displays the HTTP parameters used to request a download.

## 2.5 Security and Integrity

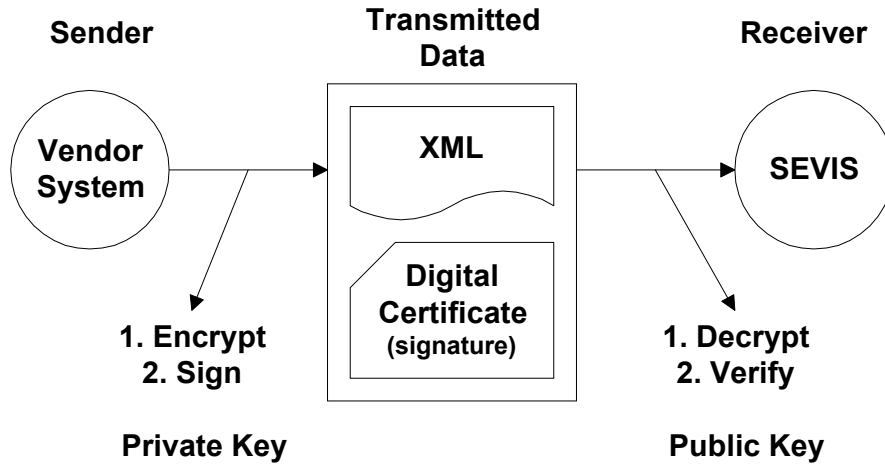
The communication between SEVIS and the User Systems relies on digital certificates to encrypt data using SSL technology. The SSL security protocol is the industry standard method for protecting web communications and provides data encryption, server authentication, file integrity, and client authentication.

To enforce data transmission security and data integrity, the SEVIS Batch Interface performs numerous security checks. First, the SEVIS Batch Interface uses HTTPS to require login and password validation at the time of data transmission. Second, it uses digital certificates to authenticate the sender's identity. Third, SSL is used to encrypt the network packages prior to transmitting over the public Internet.

**Exhibit 2–9: SEVIS Batch Interface Data Transmission Security**



**Exhibit 2–10: Data Encryption Using SSL**



### **3 DETAILED INTERFACE SPECIFICATIONS**

#### **3.1 SEVIS Batch Interface Specifications**

The SEVIS Batch Interface requires the User System to convert student and exchange visitor data into XML format, in accordance with DTD provided by SEVIS. The Users make a connection to SEVIS via HTTPS and upload the XML file. Once SEVIS receives the XML file and processes the request, the User System requests to download the data and images provided by the SEVIS Batch Interface. The protocols used in this exchange of data are TCP/IP, HTTP, and SSL technology.

The SEVIS Batch Interface utilizes the following file formats for data exchange:

- UTF-8, an ASCII-compatible multi-byte Unicode and UCS encoding format, for XML
- Device independent and resolution independent portable document format
- JPEG Format

##### **3.1.1 SEVIS Batch Interface Processing Time Specifications**

The response time for SEVIS batch processing would be at least 24 hours from the time XML file is received by SEVIS. SEVIS processes the request every midnight to process files that are placed in queue for that day. The batch queuing would be implemented through first-in first-out convention. There will be a size limitation of 500 records per batch request. Batch request greater than 500 records will have to be broken into multiple requests. Once SEVIS process the batch requests, the processed XML files and barcode Image will be kept by SEVIS for another 24 hours. If the User System fails to initiate the download of batch process files, SEVIS discards those output files. The User System re-transmits the batch requests and initiates the request to download the processed output files.

##### **3.1.2 SEVIS Batch Interface Specifications**

As depicted in exhibit 2–4, SEVIS Batch Upload/Download Formats, there are three file formats involved in the Batch Interface. They are XML files with data, image files with PDF-417 barcode image, and PDF file of eligibility form template.



### 3.1.2.1 Data Assembly Characteristics

Data Elements	(R)quired (O)ptional	Data Field Type	Data Length	Data Definition
SEVBatch	R	Structure		The SEVP Batch DTD
Header	R	Structure		Identifies transaction file
Transaction_Code	R	String	10	A Unique school code for each school, assigned during application certification/designation
Batch ID	R			
Submit_Date	R	Date	mmddyyyy	Date that transaction file was submitted.
Transaction_Num	R	String	10	Unique identifier for each transaction generated by the User System Note: The data element length must be exactly 10 characters long.
Submitter	R	Structure		Submitter's full name
First Name	R	String	40	first name
Middle Name	O	String	25	middle name
Last Name	R	String	40	last name
User Name	R	String	15	SEVIS User Name
Tran Log	R	Structure		
Results	R	Structure		
Row Number	R	Number	3	The Row Number of Records
Result Code	R	String	10	The result code generated by SEVP
Result Message	R	String	100	The Result message generated by SEVP
Batch Download	R	Structure		
Recs Processed	R	Number	3	Number of records been processed
Recs In Err		Number	3	Number of record has error
Student_Data	O	Structure		
SEVIS_Id	R/O	String	10	Data Element required for all download processes. Data Element should remain blank for Student_Data or EV_Data upload process; Data element is required for Student_Data_Change or EV_Data_Change upload process.
Create Date	R	Date	mmddyyyy	Date Created
DSO ID	R	String	10	DSO SEVP ID (user name for the DSO)
Biographic_Info	R	Structure		

*Interface Control Document for the  
Student and Exchange Visitor Information System*

<b>Data Elements</b>	<b>(R)quired (O)ptional</b>	<b>Data Field Type</b>	<b>Data Length</b>	<b>Data Definition</b>
Gender	O	String	1	M = Male; F = Female
Date_Of_Birth	R	Date	mmddyyyy	
Country_Of_Birth	R	String	2	Country of Birth (See Table A: Country Codes for SEVIS)
Country_Of_Citizenship	R	String	2	Country of Birth (See Table A: Country Codes for SEVIS)
Country_Of_LPR	R	String	2	Country of Legal Permanent Residency (See Table A: Country Codes for SEVIS)
US_Address	R	Structure		Address of current residence
US_Street1	R	String	60	First line of current street address
US_Street2	R	String	60	Second line of current street address
US_City	R	String	16	Current city of residence
US_State	R	String	2	Current U.S. state of residence
US_Zip	R	String	9	Current zip code
US_Phone_Num	O	Structure		
Foreign_Address	R	Structure		Address of foreign residence
Foreign_Street1	O	String	60	First line of foreign street address
Foreign_Street2	O	String	60	Second line of foreign street address
Foreign_City	O	String	16	Foreign city of residence
Foreign_State or Province	O	String	34	Foreign state or province of residence, complete name
Foreign_Postal_Code	O	String	9	Foreign postal code
Foreign_Country	O	String	2	Foreign country of residence (See Table A: Country Codes for SEVIS)
Financial Info	R	Structure		
EV_Data	O	Structure		
Remarks	O	String	2000	Comments made by user on student's or visitor's program
Name		Structure		
First_Name	R	String	25	Student / Visitor's First Name
Middle_Name	O	String	25	Student / Visitor's Middle Name
Last_Name	R	String	40	Student / Visitor's Last Name
US Phone Num		Structure		
Area Code	O	String	3	Current area code

*Interface Control Document for the  
Student and Exchange Visitor Information System*

<b>Data Elements</b>	<b>(R)quired (O)ptional</b>	<b>Data Field Type</b>	<b>Data Length</b>	<b>Data Definition</b>
Phone_Number	O	String	7	Current phone number
Extension	O	String	5	Current extension
Student Program				Student's program information
Program_Dates	R	Structure		
Prog_Begin_Date	R	Date	mmddyyyy	Expected start date for program participation
Prog_End_Date	R	Date	mmddyyyy	Expected completion date for program
Enrollment_Date	R	Date	mmddyyyy	Actual enrollment date, registration date
Educational_Program	R	String	40	Type of Education
Primary_Major	O	String	40	Name of student's primary major
Secondary_Major	O	String	40	Name of student's secondary major
Eng_Proficiency	R	Structure		Requirements for English language proficiency
Required	R	String	1	Is proficiency in English required for the school program? Y = Yes or N = No
Requirement_Met	R	String	1	Does student meet the English proficiency required for his/her program? Y = Yes or N = No
Not_Required_Reason	R	String	2000	Statement of why English is not required
Financial_Data	R	Structure		
Academic_Term_In_Months	R	Numeric	3	Number of months in an academic term
Expenses	R	Structure		
Tuition_Exp	R	Numeric	9,2	Student tuition expenses
Living_Exp	O	Numeric	9,2	Student living expenses
Dependent_Exp	O	Numeric	9,2	Student dependent expenses
Medical_Insurance_Exp	O	Numeric	9,2	Student medical insurance expenses
Other_Exp	O	Numeric	9,2	Other student expenses
Other_Exp_Desc	O	Numeric	80	Description of other student expenses
Funds	R	Structure		
Personal_Fund	R	Number	9,2	Personal Fund
School_Fund	O	Numeric	9,2	School funding provided
School_Fund_Desc	O	String	80	Description of school funding source
Other_Fund_Desc	O	String	80	Description of where other funding source
Employment	O	Numeric	9,2	Funds available through employment
Employment_Desc	O	String	80	Brief description of the type employer and the work that is assigned to the student.
Eligibility_Form		Structure		
Form_Purpose	O	String	1	Purpose of filling form. (See Table H: Form Purpose)

*Interface Control Document for the  
Student and Exchange Visitor Information System*

<b>Data Elements</b>	<b>(R)quired (O)ptional</b>	<b>Data Field Type</b>	<b>Data Length</b>	<b>Data Definition</b>
EV_Data	O	Structure		
Control_Num	R/O	String	10	Data Element required for all download processes. Data Element should remain blank for Student_Data or EV_Data upload process; Data element is required for Student_Data_Change or EV_Data_Change upload process.
RO_ID	R	String	10	Responsible Officer ID
EVProgram	R	Structure		
Program_Category	R	String	3	Code indicating the category of participation selected by the exchange visitor. See Table B: Program Category Codes for Exchange Visitors
Position	R	String	4	Code indicating the position of the exchange visitor. See Table C: Program Category Codes for Exchange Visitors
Program_Subject	R	String	4	Code indicating the subject of participation selected by the exchange visitor. See Table D: Program Category Codes for Exchange Visitors
Site Of Activity	R	Structure		
Site_Name	R	String	60	The Name of the Site of Activity
EV_Financial_Info	R	Structure		
EV_Funds	R	Structure		
Program_Sponsor_Fund	R	Numeric	9,2	Funds provided by program sponsor
USGovt_Agency1_Code	O	String	6	Code corresponding to government agency. See Table E.
USGovt_Agency1_Fund	O	Numeric	9,2	Funds provided by U.S. government agency
USGovt_Agency2_Code	O	String	6	Code corresponding to government agency. See Table E.
USGovt_Agency2_Fund	O	Numeric	9,2	Funds provided by a second U.S. government agency
US_Internatl_Org1_Code	O	String	6	Code corresponding to government agency. See Table F.
US_Internatl_Org1_Fund	O	Numeric	9,2	Funds provided by an international organization
US_Internatl_Org2_Code	O	String	6	Code corresponding to government agency. See Table F
US_Internatl_Org2_Fund	O	Numeric	9,2	Funds provided by a second international organization
Personal_Fund	O	Number	9,2	Funds provided by Exchange Visitor
Binational_Comm_Fund	O	Numeric	9,2	Funds provided by bi-national

*Interface Control Document for the  
Student and Exchange Visitor Information System*

<b>Data Elements</b>	<b>(R)quired (O)ptional</b>	<b>Data Field Type</b>	<b>Data Length</b>	<b>Data Definition</b>
				commission of exchange visitor's home country
Nonimm_Govt_Fund	O	Numeric	9,2	Funds provided by exchange visitor's home government
Other Fund	O	Number	9,2	Other Fund
Medical Insurance	O	Numeric	9,2	Medical insurance coverage
Dependent	O	Structure		Blank if nonimmigrant has no dependents
Relationship	R	String	3	Relationship to principal. (See Table G: Dependent Relationship)
Bar Code	R/O	String	50	Null for upload; Required for download
Print Req	R	String	1	Request Student/EV Data
Travel Documents	O	Structure		
Passport	O	Structure		
Passport_Num	O	String	40	Passport Number
Passport_Issue_Country	O	String	2	Country where passport was issued (See Table A: Country Codes for SEVIS)
Passport_Expiration_Date	O	Date	mmddyyyy	Passport expiration date
Visa	O	Structure		
Visa_Num	O	String	40	Visa Number
Visa_Issue_Date	O	Date	mmddyyyy	Visa date of issue
Visa_Issuing_Post	O	String	50	Place where visa was issued
Visa_Expiration_Date	O	Date	mmddyyyy	Visa expiration date
I94_Number	O	String	40	I-94 Number

### **3.1.2.2 Field/Element Definition**

A Document Type Definition (DTD) is a set of rules that defines the semantic rules of the XML file. The DTDs listed below defines the rules for XML files to be used by SEVIS Batch Interface. Valid XML for SEVIS Batch Interface conforms to all the well-formed rules of XML and rules of the DTD specified below.

```
<?xml version='1.0' encoding='UTF-8' ?>

<!ELEMENT SEVBatch (Header, (Batch_Upload | (Batch_Download, Tran_Log)))>

<!ELEMENT Header (Transaction_Code , Batch_ID, Submitter)>
  <!ELEMENT Transaction_Code (#PCDATA)>
  <!ELEMENT Batch_ID (Submit_Date, Transaction_Num, Seq_Num)>
    <!ELEMENT Submit_Date (#PCDATA)>
    <!ELEMENT Transaction_Num (#PCDATA)>

    <!-- Submitter's Name -->
    <!ELEMENT Submitter (First_Name, Middle_Name?, Last_Name, User_Name)>
    <!ELEMENT User_Name (#PCDATA )>

<!-- Batch Run Data -->
```

*Interface Control Document for the  
Student and Exchange Visitor Information System*

---

```
<!ELEMENT Batch_Upload (Student_Data*, Student_Data_Change*, EV_Data*,
    EV_Data_Change*)>
<!ELEMENT Batch_Download (Recs_Processed, Recs_In_Err, Student_Data* ,
    EV_Data*, Barcode)>
    <!ELEMENT Recs_Processed (#PCDATA)>
    <!ELEMENT Recs_In_Err (#PCDATA)>

<!-- Transaction Log -->
<!ELEMENT Tran_Log (Result* )>

<!ELEMENT Row_Number (#PCDATA )>

<!ELEMENT Result_Message (#PCDATA )>

<!ELEMENT Result (Result_Code , Result_Message )>
<!ATTLIST Result Row_Number CDATA #REQUIRED
    a-dtype NMTOKENS 'Row_Number int' >
<!ELEMENT Result_Code (#PCDATA )>

    <!ELEMENT Barcode (#PCDATA )>

<!--This portion begins the Create Student Format -->
<!ELEMENT Student_Data (Sevis_Id , Create_Date , DSO_ID , Biographic_Info ,
    Foreign_Address? , US_Address , US_Phone_Num? , Student_Program ,
    Eng_Proficiency , Financial_Info , Dependent? ,
    Eligibility_Form)>

<!--This portion begins the Update Student Events Format -->
<!ELEMENT Student_Data_Change (Sevis_Id , DSO_ID , Print_Req? ,
    Biographic_Info? , US_Address? , Student_Program? ,
    Financial_Info? , Dependent? , Travel_Documents? ,
    Eligibility_Form?)>

<!--This portion begins the Create EV Format -->
<!ELEMENT EV_Data (Sevis_Id? , Control_Num? , Create_Date , RO_ID ,
    Biographic_Info , Foreign_Address? , US_Address , US_Phone_Num? ,
    EVProgram, EV_Financial_Info , Dependent* , Eligibility_Form)>

<!--This portion begins the Update EV Events Format -->
<!ELEMENT EV_Data_Change (Sevis_Id , Update_Date , RO_ID , Print_Req? ,
    Biographic_Info, US_Address? , US_Phone_Num? , EVProgram , Dependent? ,
    Travel_Documents? , Eligibility_Form?)>

    <!--This portion contains the common Format -->
    <!-- used for both EVs and Students -->
    <!ELEMENT Sevis_Id (#PCDATA)>
    <!ELEMENT Create_Date (#PCDATA)>
    <!ELEMENT DSO_ID (#PCDATA)>
    <!ELEMENT End_Program (#PCDATA)>
    <!ELEMENT Print_Req (#PCDATA)>
    <!ELEMENT Control_Num (#PCDATA)>
    <!ELEMENT RO_ID (#PCDATA)>
    <!ELEMENT Update_Date (#PCDATA)>

    <!-- Biographical Information -->
    <!ELEMENT Biographic_Info (Name , Gender? , Date_Of_Birth ,
        Country_Of_Birth , Country_Of_Citizenship , LPR_Country?)>
    <!ELEMENT Gender (#PCDATA)>
    <!ELEMENT Date_Of_Birth (#PCDATA)>
```

*Interface Control Document for the  
Student and Exchange Visitor Information System*

---

```
<!ELEMENT Country_Of_Birth (#PCDATA)>
<!ELEMENT Country_Of_Citizenship (#PCDATA)>
<!ELEMENT LPR_Country (#PCDATA)>

  <!ELEMENT Name (First_Name , Middle_Name? , Last_Name)>
    <!ELEMENT First_Name (#PCDATA)>
    <!ELEMENT Middle_Name (#PCDATA)>
    <!ELEMENT Last_Name (#PCDATA)>

  <!ELEMENT US_Address (US_Street1 , US_Street2? , US_City , US_State ,
    US_Zip)>
    <!ELEMENT US_Street1 (#PCDATA)>
    <!ELEMENT US_Street2 (#PCDATA)>
    <!ELEMENT US_City (#PCDATA)>
    <!ELEMENT US_State (#PCDATA)>
    <!ELEMENT US_Zip (#PCDATA)>

  <!ELEMENT US_Phone_Num (Area_Code , Phone_Num , Ext?)>
    <!ELEMENT Area_Code (#PCDATA)>
    <!ELEMENT Phone_Num (#PCDATA)>
    <!ELEMENT Ext (#PCDATA)>

  <!ELEMENT Foreign_Address (Foreign_Address_Line1? ,
    Foreign_Address_Line2? , Foreign_City? ,
    Foreign_State_Or_Province? , Foreign_Postal_Code?)>
    <!ELEMENT Foreign_Address_Line1 (#PCDATA)>
    <!ELEMENT Foreign_Address_Line2 (#PCDATA)>
    <!ELEMENT Foreign_City (#PCDATA)>
    <!ELEMENT Foreign_State_Or_Province (#PCDATA)>
    <!ELEMENT Foreign_Postal_Code (#PCDATA)>
    <!ELEMENT Foreign_Country (#PCDATA)>

<!ELEMENT Student_Program (Program_Dates , Educational_Program ,
  Primary_Major? , Secondary_Major? , Remarks?)>

  <!ELEMENT Program_Dates (Prog_Begin_Date , Prog_End_Date ,
    Enrollment_Date?)>
    <!ELEMENT Prog_Begin_Date (#PCDATA)>
    <!ELEMENT Prog_End_Date (#PCDATA)>
    <!ELEMENT Enrollment_Date (#PCDATA)>

  <!ELEMENT Educational_Program (#PCDATA)>
    <!ELEMENT Primary_Major (#PCDATA)>
    <!ELEMENT Secondary_Major (#PCDATA)>
    <!ELEMENT Remarks (#PCDATA)>

  <!ELEMENT Eng_Proficiency (Required , Requirement_Met , Not_Reqd_Reason?)>
    <!ELEMENT Required (#PCDATA)>
    <!ELEMENT Requirement_Met (#PCDATA)>
    <!ELEMENT Not_Reqd_Reason (#PCDATA)>

<!ELEMENT Financial_Info (Academic_Term_In_Months , Expenses , Funds)>
  <!ELEMENT Academic_Term_In_Months (#PCDATA)>
  <!ELEMENT Expenses (Tuition_Exp , Living_Exp? , Dependent_Exp? ,
    Medical_Insurance_Exp? , Other_Exp? , Other_Exp_Desc?)>
```

*Interface Control Document for the  
Student and Exchange Visitor Information System*

---

```
<!ELEMENT Tuition_Exp (#PCDATA)>
<!ELEMENT Living_Exp (#PCDATA)>
<!ELEMENT Dependent_Exp (#PCDATA)>
<!ELEMENT Medical_Insurance_Exp (#PCDATA)>
<!ELEMENT Other_Exp (#PCDATA)>
<!ELEMENT Other_Exp_Desc (#PCDATA)>
<!ELEMENT Funds (Personal_Fund? , School_Fund? , School_Fund_Desc? ,
    Fund_Desc? , Other_Fund_Descr? , Employment? , Employment_Desc?)>
<!ELEMENT School_Fund (#PCDATA)>
<!ELEMENT School_Fund_Desc (#PCDATA)>
<!ELEMENT Fund_Desc (#PCDATA)>
<!ELEMENT Other_Fund_Descr (#PCDATA)>
<!ELEMENT Employment (#PCDATA)>
<!ELEMENT Employment_Desc (#PCDATA)>

<!ELEMENT EVProgram (Program_Dates , Program_Category , Program_Subject ,
    Position , Site_Of_Activity , Remarks?)>
<!ELEMENT Program_Category (#PCDATA)>
<!ELEMENT Program_Subject (#PCDATA)>
<!ELEMENT Position (#PCDATA)>
<!ELEMENT Site_Of_Activity (Site_Name , US_Address)>
<!ELEMENT Site_Name (#PCDATA)>

<!-- Financial Information -->
<!ELEMENT EV_Financial_Info (EV_Funds , Medical_Insurance)>

<!ELEMENT EV_Funds (Program_Sponsor_Fund , US_Govt_Agency1_Code? ,
    US_Govt_Agency1_Fund? , US_Govt_Agency2_Code? , US_Govt_Agency2_Fund? ,
    US_International_Org1_Code? , US_International_Org1_Fund? ,
    US_International_Org2_Code? , US_International_Org2_Fund? , Personal_Fund? ,
    Bi_National_Comm_Fund? , Nonimm_Govt_Fund? , Other_Fund?)>
<!ELEMENT Program_Sponsor_Fund (#PCDATA)>
<!ELEMENT US_Govt_Agency1_Code (#PCDATA)>
<!ELEMENT US_Govt_Agency1_Fund (#PCDATA)>
<!ELEMENT US_Govt_Agency2_Code (#PCDATA)>
<!ELEMENT US_Govt_Agency2_Fund (#PCDATA)>
<!ELEMENT US_International_Org1_Code (#PCDATA)>
<!ELEMENT US_International_Org1_Fund (#PCDATA)>
<!ELEMENT US_International_Org2_Code (#PCDATA)>
<!ELEMENT US_International_Org2_Fund (#PCDATA)>
<!ELEMENT Bi_National_Comm_Fund (#PCDATA)>
<!ELEMENT Nonimm_Govt_Fund (#PCDATA)>
<!ELEMENT Medical_Insurance (#PCDATA)>

<!ELEMENT Dependent (Biographic_Info , Relationship)>
<!ELEMENT Relationship (#PCDATA)>

<!ELEMENT Eligibility_Form (Purpose?)>
<!ELEMENT Purpose (#PCDATA)>

<!-- Travel Information -->
<!ELEMENT Travel_Documents (Passport? , Visa? , I_94_Num?)>

<!ELEMENT Passport (Passport_Num? , Passport_Issue_Country? ,
    Passport_Exp_Date?)>
<!ELEMENT Passport_Num (#PCDATA)>
<!ELEMENT Passport_Issue_Country (#PCDATA)>
<!ELEMENT Passport_Exp_Date (#PCDATA)>
```



```
<!ELEMENT Visa (Visa_Num? , Visa_Issue_Date? , Visa_Issuing_Post? ,  
    Visa_Exp_Date?)>  
  <!ELEMENT Visa_Num (#PCDATA)>  
  <!ELEMENT Visa_Issue_Date (#PCDATA)>  
  <!ELEMENT Visa_Issuing_Post (#PCDATA)>  
  <!ELEMENT Visa_Exp_Date (#PCDATA)>  
  <!ELEMENT I_94_Num (#PCDATA)>  
  <!ELEMENT Personal_Fund (#PCDATA)>  
  <!ELEMENT Other_Fund (#PCDATA)>
```

### **3.1.3 SEVIS Batch Interface Communication Methods**

The SEVIS Batch Interface uses HTTP which employs the TCP/IP communication protocol. The TCP layer breaks up the messages into manageable chunks, or packets, resends anything that gets lost, and reassembles the packets at the receiving end. In order to send these packets to the receiving end, TCP sends each of these packets to IP and tells the IP the Internet address of the receiving node. The IP then finds the route for the packet to get to the receiving node.

The SEVIS Batch Interface uses the “https://” URL access method for connecting to SEVIS HTTP server using SSL.

#### **3.1.3.1 Interface Initiation**

The SEVIS Batch Interface is initiated when the SEVIS web server service is launched. The SEVIS web server starts listening for incoming messages. The User System goes through a HTTPS URL string with user ID and password. The SEVIS web server sends back an acknowledgement once it validates the user. Once the User System has been validated, file transfer between the two systems shall proceed.

One transaction log file for each of the incoming batch would be generated. It contains information on whether or not the batch was a well-formed and valid XML file. If the file is not well formed, no processing is done. If the file is well formed but one or more of the tasks are not valid when checked against the schema, those tasks would not be processed. In addition, any and all business rule violations that are detected are captured in the log file as well.

After the batch has been saved, a message is generated. SEVIS generates response in XML format containing information regarding success/failure of the upload. The User System initiates a transaction to download this transaction log message.

#### **3.1.3.2 Flow Control**

The flow of control for SEVIS Batch Interface is performed via TCP/IP - connection-oriented communication. It is a reliable transport layer protocol that is responsible for transaction recovery and flow control. TCP is responsible for verifying correct delivery of data. TCP, also, detects data loss or errors and triggers retransmission in such cases. IP is responsible for actual delivery of data packets from node to node. The IP component provides routing services. HTTPS depends on TCP/IP to guarantee the correct and orderly delivery of data across the network. This adds reliable network communications and reliable flow control between the User Systems and SEVIS.

### **3.1.4 SEVIS Batch Interface Security Specifications**

The Message Privacy, Message integrity and mutual authentication are implemented through security features of SSL protocol.

**Message privacy** is achieved through a PKE cryptography. PKE is an encryption scheme where a pair of keys, public and private keys, are used for security. The public key is published while the private key is kept secret. Messages are encrypted using the intended recipient's public key and can only be decrypted using the private key. Public-key encryption can be used for authentication, confidentiality, integrity, and non-repudiation. All traffic between an SSL server and SSL client is encrypted using a key and encryption algorithm negotiated during the SSL handshake.

**Message integrity** service ensures that the SSL session traffic does not change en route to its final destination.

**Mutual Authentication** is the process whereby the server convinces the client of its identity and the client convinces the server of its identity. These identities are coded in the form of the public-key certificates, and the certificates are exchanged during the SSL handshake.

## **4 APPENDICES**

### **4.1 Glossary**

2D	Two-dimensional
ARO	Alternate Responsible Officer
ASCII	American Standard Code for Information Interchange
ATTLIST	Attribute List
CDATA	Character Data
DoED	Department of Education
DoS	Department of States
dpi	Dots Per Inch
DSO	Designated School Officials
DTD	Document Type Definition
EV	Exchange Visitor
FRD	Functional Requirements Document
HTTP	Hypertext Transfer Protocol
HTTPS	Hypertext Transfer Protocol Secure
ICD	Interface Control Document
INS	Immigration and Naturalization Service
IP	Internet Protocol
LZW	Lempel-Ziv Welch compression algorithm
MQ	Message Queue
OIRM	Office of Information Resources Management
PCDATA	Parsed Character Data
PDF	Portable Document Format
PDF-417	Two-dimensional barcode that utilizes stacked symbols
RO	Responsible Officer
SEVIS	Student and Exchange Visitor Information System
SEVP	Student and Exchange Visitor Program
SSL	Secure Socket Layer
TCP	Transmission Control Protocol
UCS	Universal Character Set
UTF-8	UCS Transformation Format 8
XML	Extensible Mark-up Language

## 4.2 Result Codes

<u>Code</u>	<u>Description</u>
S0000	Indicates successful result
S0001	Warning
S1001	File does not conform to dtd specification
S1002	Data type of element 'x' is incorrect format
S1003	Date element 'x' does not meet correct format
S1004	Numeric element 'x' does not meet correct format
S1005	Required element 'x' is missing
S1006	Date element 'x' is a date in the future
S1007	Program begin date must be before program end date
S1008	Transaction identifier must be unique
S1009	Institution code is invalid or inactive, record num 'x'
S1010	DSO or RO identifier is invalid or inactive, record num 'x'
S1011	SEVIS identifier is invalid or inactive, record num 'x'
S1012	EV Category is invalid, record num 'x'
S1013	Country code is invalid, record num 'x'
S1014	Subject code is invalid, record num 'x'
S1015	Agency code is invalid, record num 'x'
S1016	Organization code is invalid, record num 'x'

### 4.3 Standard Data Tables

**Table A: Country Codes for SEVIS**

<u>Code</u>	<u>Country</u>
AA	ARUBA (NETHERLANDS)
AC	ANTIGUA AND BARBUDA
AF	AFGHANISTAN
AG	ALGERIA
AL	ALBANIA
AM	ARMENIA
AN	ANDORRA
AO	ANGOLA
AQ	AMERICAN SAMOA
AR	ARGENTINA
AS	AUSTRALIA
AU	AUSTRIA
AV	ANGUILLA (AV)
AY	ANTARTICA
BA	BAHRAIN
BB	BARBADOS
BC	BOTSWANA
BD	BERMUDA (GRBR)
BE	BELGIUM
BF	BAHAMAS
BG	BANGLADESH
BH	BELIZE
BK	BOSNIA
BL	BOLIVIA
BM	BURMA (NOW MYAMMAR)
BN	BENIN
BP	SOLOMON ISLANDS (BRSI)
BR	BRAZIL
BT	BHUTAN
BU	BULGARIA
BX	BRUNEI (DARUSSALAM)
BY	BURUNDI
CA	CANADA
CB	CAMBODIA (WAS KAMPUCHEA)
CD	CHAD
CE	SRI LANKA
CF	CONGO
CG	ZAIRE
CH	CHINA (MAINLAND)
CI	CHILE
CM	CAMEROON
CN	COMOROS ISLANDS

CO	COLOMBIA
CQ	NORTHERN MARIANA (FORMERLY PACIFIC ISLANDS)
CS	COSTA RICA
CT	CENTRAL AFRICAN EMPIRE (REPUBLIC)
CU	CUBA
CV	CAPE VERDE
CY	CYPRUS
CZ	CZECHOSLOVAKIA
D1	CZECH REPUBLIC
DA	DENMARK
DJ	DJIBOUTI
DO	DOMINICA
DR	DOMINICAN REPUBLIC
EC	ECUADOR
EG	EGYPT
EI	IRELAND
EK	EQUATORIAL GUINEA
EN	ESTONIA
ER	ERITREA
ES	EL SAVADOR
ET	ETHIOPIA
FI	FINLAND
FR	FRANCE
FS	FRENCH SOUTHERN AND ANTARTIC LANDS
GA	GAMBIA
GB	GABON
GC	GERMAN DEMOCRATIC REPUBLIC (EAST)
GE	WEST GERMANY, FEDERAL REPUBLIC OF
GG	GEOGIA (OLD USSR)
GM	GERMANY
GH	GHANA
GJ	GRENADA
GQ	GUAM
GR	GREECE
GT	GUATEMALA
GV	GUINEA
GY	GUYANA
GZ	GAZA STRIP
HA	HAITI
HO	HONDURAS
HU	HUNGARY
IC	ICELAND
ID	INDONESIA
IN	INDIA
IR	IRAN
IS	ISRAEL
IT	ITALY
IV	IVORY COAST
IY	NEUTRAL ZONE (S. ARABIA/IRAQ)
IZ	IRAQ

JA	JAPAN
JM	JAMAICA
JO	JORDAN
JQ	JOHNSTON (ATOLL) ISLAND
KE	KENYA
KP	PEOPLES REPUBLIC OF KOREA (NORTH KOREA)
KR	KIRIBATI (GILB)
KS	KOREA, REPUBLIC OF (SOUTH)
KU	KUWAIT
KZ	KAZAKHSTAN
LA	LAOS
LE	LEBANON
LG	LATVIA
LH	LITHUANIA
LI	LIBERIA
LS	LICHTENSTEIN
LT	LESOTHO
LU	LUXEMBOURG
LY	LIBYA
MA	MADAGASCAR
MK	MACEDONIA
MF	MAYOTTE
MI	MALAWI
ML	MALI
MN	MONACO
MO	MOROCCO
MP	MAURITIUS
MR	MAURITANIA
MT	MALTA (AND GOZO)
MU	OMAN
MV	MALDIVES, REPUBLIC OF
MX	MEXICO
MY	MALAYSIA
MZ	MOZAMBIQUE
NG	NIGER
NH	VANUATU (NBDS, NHEB)
NI	NIGERIA
NL	NETHERLANDS
NO	NORWAY
NP	NEPAL
NR	NAURU
NS	SURINAME
NU	NICARAGUA
NZ	NEW ZEALAND
PA	PARAGUAY
PE	PERU
PK	PAKISTAN
PL	POLAND
PM	PANAMA
PO	PORTUGAL

PP	PAPUA NEW GUINEA (WAS NEW GUINA)
PU	GUINEA-BISSAU
QA	QATAR
RO	ROMANIA
RP	PHILIPPINES
RQ	PUERTO RICO
RS	RUSSIA (OLD USSR)
RW	RWANDA
SA	SAUDI ARABIA
SB	ST. PIERRE AND MIQUELON
SC	ST. CHRISTOPHER AND NEVIS
SE	SEYCHELLES
SF	SOUTH AFRICA
SG	SENEGAL
SI	SLOVENIA
LO	SLOVAK REPUBLIC
SL	SIERRA LEONE
SM	SAN MARINO
SN	SINGAPORE
SO	SOMALIA
SP	SPAIN
ST	ST. LUCIA
SU	SUDAN
SW	SWEDEN
SY	SYRIA
SZ	SWITZERLAND
TC	UNITED ARAB EMIRATES
TD	TRINIDAD & TOBAGO
TH	THAILAND
TN	TONGA
TO	TOGO
TP	SAO TOME AND PRINCIPE
TS	TUNISIA
TU	TURKEY
TV	TUVALU (GRBR)
TW	TAIWAN (FORMOSA)
TZ	TANZANIA
UG	UGANDA
UK	UNITED KINGDOM (INCLUDES HONG KONG)
UP	UKRAINE (OLD USSR)
UR	U.S.S.R.
US	U.S.A.
UV	BURKINA FASSO (WAS UPPER VOLTA)
UY	URUGUAY
VC	ST. VINCENT AND THE GRENADINES
VE	VENEZUELA
VM	VIETNAM
VQ	VIRGIN ISLANDS (US)
WA	NAMIBIA
WE	WEST BANK



WS	WESTERN SAMOA
WZ	SWAZILAND
XX	UNKNOWN
YM	YEMEN (SANAA)
YO	YUGOSLAVIA
YS	YEMEN (ADEN)
ZA	ZAMBIA
ZI	ZIMBABWE

**Table B: Program Category Codes for Exchange Visitors**

<u>Code</u>	<u>Program Category</u>
ALP	Alien Physician
AUP	Au Pair
CAC	Camp Counselor
CUS	College and University Student
GTV	Government Visitor
INV	International Visitor
NCU	Non Degree College and University Student
NFT	Non-Flight Trainee
PRS	Professor
RRS	Research Scholar
SSS	Secondary School Student
STS	Short-Term Scholar
SPC	Specialist
SWT	Summer Work Travel
TEC	Teacher
TRE	Trainee

**Table C: Position Codes for Exchange Visitors**

<u>Code</u>	<u>Position</u>
100	CATEGORY - GOVERNMENT
110	CENTRAL GOVERNMENT GROUP
111	HEAD OF GOVERNMENT
112	MINISTERIAL LEVEL OFFICIAL
113	EXECUTIVE LEVEL OFFICIAL
114	CIVIL SERVICE EMPLOYEE IN CENTRAL GOVERNMENT
115	PROFESSIONALS AND SCIENTISTS IN CENTRAL GOVERNMENT
116	LEGISLATOR IN CENTRAL GOVERNMENT
117	JUDGES IN CENTRAL GOVERNMENT
118	MANAGER OF STATE ENTERPRISE
119	CENTRAL GOVERNMENT, OTHER
120	STATE, REGIONAL, OR PROVINCIAL GOVERNMENT GROUP
121	GOVERNOR OR OTHER CHIEF OF REGIONAL UNIT
122	SENIOR HEAD OF REGIONAL DEPT.
123	EXECUTIVE LEVEL REGIONAL OFFICIALS
124	CIVIL SERVICE EMPLOYEE IN REGIONAL/STATE GOVERNMENT
125	PROFESSIONALS AND SCIENTISTS IN REGIONAL GOVERNMENT
126	LEGISLATOR IN REGIONAL OR STATE GOVERNMENT
127	JUDGES IN REGIONAL OR STATE GOVERNMENT
128	MANAGER OF REGIONAL ENTERPRISE
129	REGIONAL GOVERNMENT, OTHER
130	CITY OR TOWN GOVERNMENT GROUP

131 MAYOR OR CITY MANAGER  
132 HEAD OF CITY DEPARTMENT  
133 EXECUTIVE LEVEL CITY OR TOWN OFFICIALS  
134 CIVIL SERVICE EMPLOYEE IN CITY OR TOWN GOVERNMENT  
135 PROFESSIONALS AND SCIENTISTS IN CITY OR TWON GOVERNMENT  
136 LEGISLATOR IN CITY OR TOWN GOVERNMENT  
137 JUDGES IN CITY OR TOWN GOVERNMENT  
138 MANAGER OF CITY ENTERPRISE  
139 CITY OR TOWN GOVERNMENT, OTHER  
140 INTERNATIONAL ORGANIZATION GROUP  
141 HEAD OF INTERNATIONAL ORGANIZATION GROUP  
142 SENIOR OFFICIAL OF INTERNATIONAL ORGANIZATION  
143 EMPLOYEE OF INTERNATIONAL ORGANIZATION  
200 CATEGORY - ACADEMIC COMMUNITY  
210 UNIVERSITY LEVEL GROUP  
211 UNIVERSITY PRESIDENT OR RECTOR  
212 UNIVERSITY ADMINISTRATIVE STAFF  
213 UNIVERSITY TEACHING STAFF INCLUDING RESEARCHERS  
214 UNIVERSITY GRADUATE STUDENTS  
215 UNIVERSITY UNDERGRADUATE STUDENTS  
216 UNIVERSITY MEDICAL SCHOOL STUDENTS  
217 UNIVERSITY SCHOOL STUDENTS IN OTHER PROFESSIONS  
218 UNIVERSITY POST GRAD MEDICAL TRAINEE  
219 UNIVERSITY, OTHER  
220 SECONDARY SCHOOL GROUP  
221 SECONDARY SCHOOL PRINCIPAL  
222 SECONDARY SCHOOL TEACHER OR STAFF  
223 SECONDARY SCHOOL STUDENT  
229 SECONDARY SCHOOL, OTHER  
230 ELEMENTARY SCHOOL GROUP  
231 ELEMENTARY PRINCIPAL, TEACHER OR STAFF  
239 ELEMENTARY SCHOOL, OTHER  
240 SPECIAL SCHOOLS, INSTITUTES, OR VOCATIONAL SCHOOL GROUPS  
241 SPECIAL SCHOOL, INSTITUTE, OR VOCATIONAL HEAD  
242 SPECIAL SCHOOL, INSTITUTE, OR VOCATIONAL TEACHER OR STAFF  
249 SPECIAL SCHOOL, INSTITUTE, OR VOCATIONAL - OTHER  
300 CATEGORY - PRIVATE SECTOR  
310 PRIVATE BUSINESS GROUP  
311 PRIVATE BUSINESS ENTREPRENEUR  
312 CORPORATE EXECUTIVE  
313 MANAGER EMPLOYED BY PRIV.BUS  
314 EMPLOYEE OF PRIVATE BUSINESS  
315 PROFESSIONAL OR SCIENTISTS IN PRIVATE BUSINESS  
319 PRIVATE BUSINESS, OTHER  
320 SELF-EMPLOYED PROFESSIONALS GROUP  
321 SELF-EMPL.PROFES.(LEGAL FIELD)  
322 SELF-EMPL.PROFES.(MEDICAL FLD)  
323 SELF-EMPL.PROFES.(TECH.FIELD)  
329 SELF-EMPL.PROFES.-OTHER  
330 INDEPENDENT, NON-PROFIT, HOSPITALS, OR OTHER ORGANIZATION GROUPS

331 DIR. OF INSTIT/CORP.OR HOSPITAL  
332 MANAGER-EXEC EMPL.BY INST/CORP  
334 EMPLOYEE OF IND.INSTIT OR CORP  
335 INSTIT/CORP PROFESS'NAL/SCIEN.  
339 INDEPENDENT, NON-PROFIT, HOSPITALS, OR SIMILAR ORGANIZATION - OTHE  
340 AGRICULTURE (INCL. FORRESTRY AND FISHERIES) GROUP  
341 AGRICULTURAL ENTREPRENEUR  
342 EXECUTIVE OF AGRICULT BUSINESS  
343 AGRICULTURAL MANAGER  
344 EMPLOYEE OF AGRICUL.ENTERPRISE  
345 PROFESSIONAL OR SCIENTISTS IN AGRICULTURE  
349 AGRICULTURE, OTHER  
350 RELIGION GROUP  
351 MINISTER OF RELIGION  
352 RELIGIOUS ORDER/CONGREGAT.MBER  
353 THEOLOGIAN  
400 CATEGORY - THE ARTS AND SPORTS  
410 THE ARTS GROUP  
411 ARTIST (GRAPHIC ARTS)  
412 AUTHOR (PLAYWRIGHT, POET)  
413 STAGE OR FILM ACTOR  
414 FILM (OR STAGE) PRODUCER  
415 COMPOSER OR MUSICIAN  
419 ARTS, OTHER  
420 THE SPORTS GROUP  
421 ATHLETE  
422 COACH  
429 SPORTS, OTHER  
500 CATEGORY - LABOR  
510 LABOR UNION GROUP  
511 LABOR UNION HEAD  
512 LABOR UNION OFFICIAL  
513 LABOR UNION, OTHER  
520 LABOR UNION MINISTRY GROUP  
521 LABOR MINISTER(OR LAB.AG.HEAD)  
522 SENIOR MINISTERIAL OFFICIAL  
523 MINISTERIAL OR LABOR AG.EMPL.  
529 MINISTRY OF LABOR, OTHER  
530 LABOR EXPERTS IN ACADEMIA GROUP  
531 CODE DELETED - SEE 213  
539 LABOR EXPERTS IN ACADEMIA, OTHER  
540 LABOR ORGANIZATION AND OTHER LABOR GROUPS  
541 HEAD OF LABOR ORGANIZATION  
542 EMPLOYEE OF LABOR ORGANIZATION  
600 CATEGORY - COMMUNICATIONS  
610 ELECTRONIC MEDIA GROUP  
611 HEAD OF TV OR RADIO STATION  
612 RADIO OR TV JOURNALIST  
613 ELECTRONIC MEDIA TECHNICIAN  
619 ELECTONIC MEDIA, OTHER

620 PRINTED MEDIA GROUP  
621 EDITOR AND/OR PUBLISHER  
622 JOURNALIST  
623 TECH.OFFI.IN PRINTED MEDIA FLD  
629 PRINTED MEDIA, OTHER  
630 FILM AS NEWS MEDIA GROUP  
631 FILM MAKER  
639 FILM AS NEWS MEDIA, OTHER  
700.... CATEGORY - IMPORTANT POLITICAL FIGURES  
710 OPPOSITION LEADER(NOT IN GOVT)  
720 OPPOSITION LEADER - LEGISLATURE GRP  
730 FORMER INFLUENTIAL POLITICAL OFFICIAL  
790 IMPORTANT POLITICAL FIGURE  
800 CATEGORY - MILITARY  
900.....CATEGORY - OTHER

**Table D: Subject Codes for Exchange Visitors**

<u>Code</u>	<u>Subject</u>
0001	HUMANITIES GENERAL HUMANITIES
0010	HUMANITIES LIB.ARTS CURRICULUM/UNIV.LEVEL
0090	HUMANITIES MISCELLANEOUS HUMANITIES
0100	ARTS GENERAL ARTS
0110	ARTS ART HISTORY
0120	ARTS GRAPHICS
0130	ARTS PAINTING
0140	ARTS SCULPTURE
0150	ARTS CRAFTS
0151	ARTS CERAMICS
0160	ARTS DESIGN
0170	ARTS PHOTOGRAPHY
0180	ARTS MUSEUM CURATOR
0181	ARTS MUSEUM SERVICES
0185	ARTS GALLERIES
0187	ARTS VISUAL ARTS
0190	ARTS MISCELLANEOUS ARTS
0200	DRAMA GENERAL DRAMA
0210	DRAMA ACTING
0220	DRAMA HISTORY OF DRAMA
0230	DRAMA DIRECTING
0250	DRAMA WRITING
0260	DRAMA MOVIE PRODUCTION
0270	DRAMA THEATER & STAGE
0280	DRAMA OBSERV.OF US DRAMA & INSTIT.
0290	DRAMA MISCELLANEOUS DRAMA
0300	HISTORY GENERAL HISTORY
0310	HISTORY ECONOMIC HISTORY
0320	HISTORY ANCIENT HISTORY
0330	HISTORY CULT. & INTELLECTUAL HISTORY

0350 HISTORY MEDIEVAL & RENAISSANCE HISTORY  
0360 HISTORY MODERN HISTORY  
0370 HISTORY WORLD HISTORY  
0371 HISTORY AFRICAN HISTORY  
0372 HISTORY EAST ASIA/PAC/AUST HISTORY  
0373 HISTORY SOUTH ASIAN HISTORY  
0374 HISTORY SOUTH-EAST ASIAN HISTORY  
0375 HISTORY EASTERN EUROPE HISTORY  
0376 HISTORY WESTERN EUROPE(&CANADA)HISTORY  
0377 HISTORY SOUTH AMERICAN HISTORY  
0378 HISTORY NEAR EASTERN HISTORY  
0379 HISTORY U.S. HISTORY  
0390 HISTORY MISCELLANEOUS HISTORY  
0400 LITERATURE GENERAL LITERATURE  
0401 LITERATURE LITERARY CRITICISM  
0410 LITERATURE AMERICAN LITERATURE  
0420 LITERATURE LITERARY COMPOSITION  
0421 LITERATURE CREATIVE WRITING  
0430 LITERATURE ENGLISH  
0440 LITERATURE POETRY  
0450 LITERATURE SPEECH  
0460 LITERATURE CHILDREN'S BOOKS  
0470 LITERATURE COMPARATIVE LITERATURE  
0490 LITERATURE MISCELLANOUS LITERATURE  
0500 MUSIC MUSIC, GENERAL  
0501 MUSIC MUSIC THEORY  
0505 MUSIC MUSICOLOGY  
0510 MUSIC DANCE  
0511 MUSIC CHOREOGRAPHY  
0520 MUSIC CONDUCTING  
0530 MUSIC HISTORY OF MUSIC  
0531 MUSIC AMERICAN MUSIC  
0532 MUSIC MUSICAL PERFORMERS  
0540 MUSIC VOICE  
0550 MUSIC MUSICAL COMPOSITION  
0560 MUSIC MUSIC TRAINING - INSTRUMENTS  
0570 MUSIC OBSERV.OF US MUSIC & INSTIT.  
0590 MUSIC MISCELLANEOUS MUSIC  
0600 PHILOSOPHY GENERAL PHILOSOPHY  
0620 PHILOSOPHY PHILOSOPHICAL LOGIC  
0690 PHILOSOPHY MISCELLANEOUS PHILOSOPHY  
0700 THEOLOGY GENERAL THEOLOGY  
0710 THEOLOGY WORLD RELIGIONS  
0720 THEOLOGY RELIGIOUS EDUCATION  
0790 THEOLOGY MISCELLANEOUS THEOLOGY  
1000 SOCIAL SCIENCES GENERAL SOCIAL SCIENCES  
1010 SOCIAL SCIENCES INTERDISCIPLINARY SOCIAL SCIENCE  
1040 SOCIAL SCIENCES RESEARCH TECHNIQUES  
1090 SOCIAL SCIENCES MISCELLANEOUS SOCIAL SCIENCES  
1100 ANTHROPOLOGY GENERAL ANTHROPOLOGY

---

1110 ANTHROPOLOGY FOLKLORE  
1120 ANTHROPOLOGY ETHNO-MUSICOLOGY  
1130 ANTHROPOLOGY PHYSICAL ANTHROPOLOGY  
1140 ANTHROPOLOGY SOCIAL ANTHROPOLOGY  
1141 ANTHROPOLOGY CULTURAL ANTHROPOLOGY  
1150 ANTHROPOLOGY ETHNOGRAPHY  
1160 ANTHROPOLOGY MINORITIES & MIN RELATIONS  
1190 ANTHROPOLOGY MISCELLANEOUS ANTHROPOLOGY  
1200 ARCHAEOLOGY GENERAL ARCHAEOLOGY  
1221 ARCHAEOLOGY CLASSICAL ARCHAEOLOGY  
1230 ARCHAEOLOGY ARCHAEOLOGICAL METHODS  
1290 ARCHAEOLOGY MISCELLANEOUS ARCHAEOLOGY  
1300 DEMOGRAPHY GENERAL DEMOGRAPHY  
1310 DEMOGRAPHY FERTILITY  
1320 DEMOGRAPHY MIGRATION  
1340 DEMOGRAPHY POPULATION STUDIES  
1350 DEMOGRAPHY POPULATION CONTROL  
1360 DEMOGRAPHY US CENSUS TECHNIQUES  
1390 DEMOGRAPHY MISCELLANEOUS DEMOGRAPHY  
1400 ECONOMICS GENERAL ECONOMICS  
1410 ECONOMICS MICROECONOMICS  
1420 ECONOMICS MACROECONOMICS  
1430 ECONOMICS HISTORY OF ECONOMIC THOUGHT  
1440 ECONOMICS ECONOMICS STATISTICS  
1441 ECONOMICS ECONOMETRICS  
1450 ECONOMICS ECONOMIC PLANNING  
1460 ECONOMICS ECONOMIC SYSTEMS  
1470 ECONOMICS ECONOMIC DEVELOPMENT  
1480 ECONOMICS INTERNATIONAL ECONOMICS  
1490 ECONOMICS MONETARY THEORY  
1491 ECONOMICS MONEY AND BANKING  
1492 ECONOMICS MONETARY POLICY  
1500 ECONOMICS FISCAL THEORY  
1510 ECONOMICS INDUSTRIAL RELATIONS  
1520 ECONOMICS PUBLIC FINANCE AND TAX POLICY  
1530 ECONOMICS AGRICULTURAL ECONOMICS  
1540 ECONOMICS LAND ECONOMICS  
1550 ECONOMICS MARKETING ECONOMICS  
1560 ECONOMICS TRANSPORTATION ECONOMICS  
1561 ECONOMICS ENERGY ECONOMICS  
1570 ECONOMICS US ECONOMIC SYSTEM  
1580 ECONOMICS OBSERV.OF US ECO.INSTITUTIONS  
1590 ECONOMICS MISCELLANEOUS ECONOMICS  
1600 POLITICAL SCIENCE GENERAL POLITICAL SCIENCES  
1610 POLITICAL SCIENCE POLITICAL SCIENCE THEORY  
1620 POLITICAL SCIENCE COMPARATIVE POLITICS  
1630 POLITICAL SCIENCE MUNICIPAL GOVERNMENT  
1640 POLITICAL SCIENCE STATE AND LOCAL GOVERNMENTS  
1641 POLITICAL SCIENCE POLITICAL PARTIES  
1650 POLITICAL SCIENCE US POLITICAL SYSTEM

---

1660 POLITICAL SCIENCE US ELECTIONS  
1670 POLITICAL SCIENCE OBSERVATION OF US GOVERNMENT  
1680 POLITICAL SCIENCE GENERAL AREA POLITICS  
1681 POLITICAL SCIENCE AFRICAN POLITICS  
1682 POLITICAL SCIENCE EAST ASIA/PAC/AUST POLITICS  
1683 POLITICAL SCIENCE SOUTH ASIAN POLITICS  
1684 POLITICAL SCIENCE SOUTH-EAST ASIAN POLITICS  
1685 POLITICAL SCIENCE EAST EUROPE & USSR POLITICS  
1686 POLITICAL SCIENCE WESTERN EUR(& CANADA)POLITICS  
1687 POLITICAL SCIENCE LATIN AMERICAN POLITICS  
1688 POLITICAL SCIENCE NEAR EASTERN POLITICS  
1690 POLITICAL SCIENCE MISC. POLITICAL SCIENCE  
1700 PSYCHOLOGY GENERAL PSYCHOLOGY  
1710 PSYCHOLOGY CLINICAL PSYCHOLOGY  
1711 PSYCHOLOGY APPLIED PSYCHOLOGY  
1712 PSYCHOLOGY ABNORMAL PSYCHOLOGY  
1720 PSYCHOLOGY NON-EDUC.COUNSELING & GUIDANCE  
1730 PSYCHOLOGY DEVELOPMENTAL PSYCHOLOGY  
1740 PSYCHOLOGY EXPERIMENTAL PSYCHOLOGY  
1750 PSYCHOLOGY INDUSTRIAL PSYCHOLOGY  
1760 PSYCHOLOGY SOCIAL PSYCHOLOGY  
1770 PSYCHOLOGY CHILD PSYCHOLOGY  
1780 PSYCHOLOGY TESTS AND MEASURES  
1781 PSYCHOLOGY PSYCHOMETRICS  
1790 PSYCHOLOGY MISCELLANEOUS PSYCHOLOGY  
1800 SOCIOLOGY GENERAL SOCIOLOGY  
1810 SOCIOLOGY SOCIAL THEORY  
1820 SOCIOLOGY METHODOLOGY (SOCIOLOGY)  
1821 SOCIOLOGY SOCIOLOGICAL RESEARCH/DESIGN  
1830 SOCIOLOGY SOCIAL ORGAN.,STRUCTURE&INSTIT  
1831 SOCIOLOGY U.S. FAMILY SYSTEM  
1840 SOCIOLOGY RURAL SOCIOLOGY  
1841 SOCIOLOGY URBAN SOCIOLOGY  
1850 SOCIOLOGY EDUCATIONAL SOCIOLOGY  
1851 SOCIOLOGY SOCIOLOGY, CULTURAL  
1860 SOCIOLOGY ENVIRONMENTAL SOCIOLOGY  
1861 SOCIOLOGY REGIONAL STUDIES  
1865 SOCIOLOGY RACE RELATIONS  
1870 SOCIOLOGY WOMENS' ROLE  
1890 SOCIOLOGY MISCELLANEOUS SOCIOLOGY  
2000 PHYSICAL SCIENCES GENERAL PHYSICAL SCIENCES  
2020 PHYSICAL SCIENCES SCIENTIFIC RESEARCH  
2030 PHYSICAL SCIENCES SCIENCE & TECHNOLOGY  
2050 PHYSICAL SCIENCES AEROSPACE SCIENCE  
2060 PHYSICAL SCIENCES MATERIAL SCIENCE  
2090 PHYSICAL SCIENCES MISC. PHYSICAL SCIENCES  
2100 ASTRONOMY GENERAL ASTRONOMY  
2110 ASTRONOMY ASTROPHYSICS  
2119 ASTRONOMY MISCELLANEOUS ASTRONOMY  
2120 SPACE SCIENCES SPACE PROGRAMS



2121 SPACE SCIENCES AEROSPACE SCIENCE  
2139 SPACE SCIENCES MISCELLANEOUS SPACE SCIENCES  
2190 ASTRONOMY MISCELLANEOUS ASTRONOMY  
2200 ATMOSPHERIC/EARTH SCI GENERAL ATMOSPH&EARTH SCIENCES  
2210 ATMOSPHERIC/EARTH SCI ATMOSPHERIC DYNAMICS  
2220 ATMOSPHERIC/EARTH SCI CLIMATOLOGY  
2230 ATMOSPHERIC/EARTH SCI METEOROLOGY SYNOPTIC  
2239 ATMOSPHERIC/EARTH SCI PETROLEUM GEOLOGY  
2240 ATMOSPHERIC/EARTH SCI GEOLOGY  
2241 ATMOSPHERIC/EARTH SCI GEOCHEMISTRY  
2242 ATMOSPHERIC/EARTH SCI GEODESY  
2243 ATMOSPHERIC/EARTH SCI SOLID-EARTH GEOPHYSICS  
2244 ATMOSPHERIC/EARTH SCI SURVEYING  
2245 ATMOSPHERIC/EARTH SCI GEOPHYSICS & SEISMOLOGY  
2250 ATMOSPHERIC/EARTH SCI PALEONTOLOGY  
2255 ATMOSPHERIC/EARTH SCI MINERALOGY  
2260 ATMOSPHERIC/EARTH SCI HYDROLOGY  
2261 ATMOSPHERIC/EARTH SCI OCEANOGRAPHY  
2270 GEOGRAPHY GENERAL GEOGRAPHY  
2271 GEOGRAPHY AFRICAN GEOGRAPHY  
2272 GEOGRAPHY EAST ASIAN/PAC/AUST GEOGRAPHY  
2273 GEOGRAPHY SOUTH ASIAN GEOGRAPHY  
2274 GEOGRAPHY SOUTH-EAST ASIAN GEOGRAPHY  
2275 GEOGRAPHY EASTERN EUROPE GEOGRAPHY  
2276 GEOGRAPHY WESTERN EUROPE(INCL.CANADA)GEO  
2277 GEOGRAPHY SOUTH AMERICAN GEOGRAPHY  
2278 GEOGRAPHY NEAR EASTERN GEOGRAPHY  
2279 GEOGRAPHY U. S. GEOGRAPHY  
2280 GEOGRAPHY MISCELLANEOUS GEOGRAPHY  
2281 GEOGRAPHY CARTOGRAPHY  
2300 BIOLOGY GENERAL BIOLOGY  
2310 BIOLOGY ANATOMY  
2311 BIOLOGY HISTOLOGY  
2320 BIOLOGY BOTANY  
2321 BIOLOGY PLANT PHYSIOLOGY  
2330 BIOLOGY ECOLOGY  
2340 BIOLOGY ENTOMOLOGY  
2350 BIOLOGY GENETICS  
2360 BIOLOGY IMMUNOLOGY  
2370 BIOLOGY MICROBIOLOGY  
2371 BIOLOGY PARASITOLOGY  
2372 BIOLOGY BACTERIOLOGY  
2380 BIOLOGY NUTRITION  
2390 BIOLOGY CELLULAR BIOLOGY  
2400 BIOLOGY PATHOLOGY  
2410 BIOLOGY PHYSIOLOGY  
2420 BIOLOGY PLANT PATHOLOGY  
2430 BIOLOGY VIROLOGY  
2440 BIOLOGY ZOOLOGY  
2450 BIOLOGY MARINE BIOLOGY

2460 BIOLOGY RADIOBIOLOGY  
2470 BIOLOGY EMBRYOLOGY  
2480 BIOLOGY TOXICOLOGY  
2490 BIOLOGY MISCELLANEOUS BIOLOGY  
2500 CHEMISTRY GENERAL CHEMISTRY  
2510 CHEMISTRY ANALYTICAL CHEMISTRY  
2520 CHEMISTRY INORGANIC CHEMISTRY  
2521 CHEMISTRY CRYSTALLOGRAPHY  
2530 CHEMISTRY ORGANIC CHEMISTRY  
2540 CHEMISTRY PHYSICAL CHEMISTRY  
2550 CHEMISTRY BIOCHEMISTRY  
2560 CHEMISTRY PETROCHEMICALS  
2570 CHEMISTRY RADIOCHEMISTRY  
2580 CHEMISTRY PHARMACEUTICAL CHEMISTRY  
2590 CHEMISTRY MISCELLANEOUS CHEMISTRY  
2600 MATHEMATICS GENERAL MATHEMATICS  
2601 MATHEMATICS ALGEBRA  
2610 MATHEMATICS MATHEMATICAL ANALYSIS  
2611 MATHEMATICS FUNCTIONAL ANALYSIS  
2630 MATHEMATICS MATHEMATICAL LOGIC  
2640 MATHEMATICS APPLIED MATHEMATICS  
2650 MATHEMATICS NUMBER THEORY  
2660 MATHEMATICS NUMERICAL METHODS  
2670 MATHEMATICS TOPOLOGY  
2680 MATHEMATICS STATISTICS  
2681 MATHEMATICS MATHEMATICAL PROBABILITY  
2690 MATHEMATICS MISCELLANEOUS MATHEMATICS  
2700 PHYSICS GENERAL PHYSICS  
2710 PHYSICS ACOUSTICS  
2720 PHYSICS ATOMIC & MOLECULAR PHYSICS  
2721 PHYSICS ATOMIC ENERGY  
2730 PHYSICS ELECTRO-MAGNETISM  
2740 PHYSICS ELEMENTARY PARTICLES  
2750 PHYSICS MECHANICS  
2760 PHYSICS NUCLEAR PHYSICS  
2770 PHYSICS OPTICS  
2780 PHYSICS FLUID HYDRAULICS  
2790 PHYSICS SOLID STATE  
2800 PHYSICS ELECTRONICS  
2810 PHYSICS THERMAL PHYSICS  
2820 PHYSICS QUANTUM THEORY  
2830 PHYSICS CRYOGENICS  
2840 PHYSICS BIOPHYSICS  
2850 PHYSICS SEMICONDUCTOR SURFACE PHYSICS  
2885 PHYSICS MATHEMATICAL PHYSICS  
2889 PHYSICS RELATIVITY PHYSICS  
2890 PHYSICS MISCELLANEOUS PHYSICS  
2900 TRANSPORTATION GENERAL TRANSPORTATION  
2910 TRANSPORTATION AVIATION  
2920 TRANSPORTATION AERONAUTICS

*Interface Control Document for the  
Student and Exchange Visitor Information System*

---

2930	TRANSPORTATION	URBAN TRANSPORTATION
2931	TRANSPORTATION	RAPID TRANSIT
2940	TRANSPORTATION	MARITIME AFFAIRS
2950	TRANSPORTATION	US ROADS AND HIGHWAYS
2960	TRANSPORTATION	TELECOMMUNICATIONS
2970	TRANSPORTATION	PIPELINES AND TANKERS
2990	TRANSPORTATION	MISCELLANEOUS TRANSPORTATION
3000	ENGINEERING	GENERAL ENGINEERING
3001	ENGINEERING	ENGINEERING TECHNOLOGY
3010	ENGINEERING	CIVIL ENGINEERING
3020	ENGINEERING	ARCHITECTURAL ENGINEERING
3030	ENGINEERING	CONSTRUCTION ENGINEERING
3040	ENGINEERING	SANITARY ENGINEERING
3050	ENGINEERING	MATERIALS ENGINEERING
3060	ENGINEERING	TRANSPORTATION ENGINEERING
3070	ENGINEERING	ENVIRONMENTAL ENGINEERING
3071	ENGINEERING	BIOENGINEERING/BIOMEDICAL ENG
3080	ENGINEERING	AERODYNAMICAL ENGINEERING
3100	ENGINEERING	ELECTRICAL ENGINEERING
3102	ENGINEERING	SYSTEMS DESIGN
3110	ENGINEERING	ELECTRONIC ENGINEERING
3111	ENGINEERING	COMPUTER ENGINEERING
3112	ENGINEERING	COMMUNICATIONS ENGINEERING
3120	ENGINEERING	MECHANICAL ENGINEERING
3130	ENGINEERING	MINING ENGINEERING
3140	ENGINEERING	GEOLOGICAL ENGINEERING
3150	ENGINEERING	GEOPHYSICAL ENGINEERING
3160	ENGINEERING	PETROLEUM/COAL/GAS ENGINEERING
3161	ENGINEERING	PETROLEUM REFINING
3162	ENGINEERING	COMBUSTION ENGINEERING
3170	ENGINEERING	AERONAUTICAL ENGINEERING
3171	ENGINEERING	AEROSPACE ENGINEERING
3180	ENGINEERING	AGRICULTURAL ENGINEERING
3190	ENGINEERING	CHEMICAL ENGINEERING
3195	ENGINEERING	THERMAL ENGINEERING
3200	ENGINEERING	INDUSTRIAL ENGINEERING
3210	ENGINEERING	METALLURGICAL ENGINEERING
3220	ENGINEERING	NAVAL ENGINEERING
3221	ENGINEERING	MARINE ENGINEERING
3230	ENGINEERING	NUCLEAR ENGINEERING
3260	ENGINEERING	TEXTILE ENGINEERING
3290	ENGINEERING	MISCELLANEOUS ENGINEERING
3300	ENERGY	GENERAL ENERGY
3310	ENERGY	MINING AND QUARRYING
3320	ENERGY	PETROLEUM/COAL/GAS ENERGY
3330	ENERGY	HYDROELECTRIC ENERGY
3340	ENERGY	SOLAR AND WIND ENERGY
3350	ENERGY	GEOHERMAL ENERGY
3360	ENERGY	ENERGY CONSERVATION
3390	ENERGY	MISCELLANEOUS ENERGY

*Interface Control Document for the  
Student and Exchange Visitor Information System*

---

3400	COMPUTER SCIENCE/TECH	GENERAL COMPUTER SCIENCES
3410	COMPUTER SCIENCE/TECH	INFORMATION SCIENCES & SYSTEMS
3420	COMPUTER SCIENCE/TECH	DATA PROCESSING
3430	COMPUTER SCIENCE/TECH	CYBERNETICS
3440	COMPUTER SCIENCE/TECH	COMPUTER ENGINEERING & DESIGN
3450	COMPUTER SCIENCE/TECH	SYSTEMS ANALYSIS/OPER.RSCH.
3460	COMPUTER SCIENCE/TECH	COMPUTER OPERATOR TECHNOLOGY
3470	COMPUTER SCIENCE/TECH	COMPUTER MAINTENANCE TECH.
3480	COMPUTER SCIENCE/TECH	INPUT PREP. TECH. (KEYPUNCH)
3490	COMPUTER SCIENCE/TECH	MISCELLANEOUS COMPUTER SCI.
3500	BUSINESS	GENERAL BUSINESS
3510	BUSINESS	MANAGEMENT
3511	BUSINESS	PERSONNEL
3520	BUSINESS	COST & FINANCIAL ADMIN
3530	BUSINESS	BUSINESS POLICY
3540	BUSINESS	INT'L BUSINESS ADMINISTRATION
3560	BUSINESS	MANAGEMENT TRAINING
3570	BUSINESS	ACCOUNTING
3571	BUSINESS	BUSINESS TAXATION ACCOUNTING
3580	BUSINESS	BUSINESS STATISTICS
3590	BUSINESS	OPERATIONS RESEARCH
3610	BUSINESS	GENERAL FINANCE
3620	BUSINESS	INVESTMENTS AND SECURITIES
3640	BUSINESS	BANKING
3650	BUSINESS	GENERAL MARKETING
3660	BUSINESS	MARKETING RESEARCH
3670	BUSINESS	PRODUCTION AND MANUFACTURING
3671	BUSINESS	BUILDING AND CONSTRUCTION
3680	BUSINESS	US INDUSTRY
3690	BUSINESS	ADVERTISING
3700	BUSINESS	INSURANCE
3710	BUSINESS	REAL ESTATE
3720	BUSINESS	INTERNATIONAL BUSINESS
3721	BUSINESS	INTERNATIONAL TRADE
3722	BUSINESS	MULTINATIONAL CORPORATIONS
3730	BUSINESS	COMMERCE
3790	BUSINESS	MISCELLANEOUS BUSINESS
3900	LABOR	GENERAL LABOR
3910	LABOR	LABOR ORGANIZATIONS
3920	LABOR	COLLECTIVE BARGAINING
3930	LABOR	LABOR RELATIONS
3940	LABOR	US LABOR
3950	LABOR	EMPLOYMENT & UNEMPLOYMENT
3960	LABOR	MANPOWER
3970	LABOR	LABOR UNION ADMINISTRATION
3990	LABOR	MISCELLANEOUS LABOR
4000	ARCHITECTURE	GENERAL ARCHITECTURE
4010	ARCHITECTURE	CITY PLANNING
4030	ARCHITECTURE	URBAN ARCHITECTURE
4040	ARCHITECTURE	LANDSCAPE ARCHITECTURE

4050 ARCHITECTURE ARCHITECTURAL ENERGY STUDIES  
4090 ARCHITECTURE MISCELLANEOUS ARCHITECTURE  
4100 CRIMINOLOGY GENERAL CRIMINOLOGY  
4120 CRIMINOLOGY NARCOTICS CONTROL  
4130 CRIMINOLOGY PRISON REFORM  
4140 CRIMINOLOGY LAW ENFORCEMENT  
4190 CRIMINOLOGY MISCELLANEOUS CRIMINOLOGY  
4200 COMMUNICATIONS GENERAL COMMUNICATIONS  
4210 COMMUNICATIONS MASS COMMUNICATIONS  
4218 COMMUNICATIONS GENERAL JOURNALISM  
4220 COMMUNICATIONS PRINT JOURNALISM  
4221 COMMUNICATIONS RADIO JOURNALISM  
4222 COMMUNICATIONS TELEVISION JOURNALISM  
4223 COMMUNICATIONS FILM TECHNOLOGY  
4224 COMMUNICATIONS PRINTING AND PUBLISHING  
4225 COMMUNICATIONS PRESS AND NEWSPAPERS  
4226 COMMUNICATIONS ELECTRONIC COMMUNIC. TECH.  
4240 COMMUNICATIONS SPACE COMMUNICATIONS  
4280 COMMUNICATIONS NEWS AGENCIES  
4290 COMMUNICATIONS MISCELLANEOUS COMMUNICATIONS  
4300 LAW GENERAL LAW  
4310 LAW BUSINESS AND LABOR LAW  
4311 LAW CORPORATION LAW  
4312 LAW ENVIRONMENTAL LAW  
4313 LAW PUBLIC LAW  
4314 LAW TORT LAW  
4315 LAW CIVIL LIBERTIES  
4320 LAW INTERNATIONAL LAW  
4330 LAW COMPARATIVE LAW/LEGAL SYSTEMS  
4340 LAW INTERNATIONAL TAXES, ROYALTIES  
4350 LAW CRIMINAL LAW  
4360 LAW OBSERVATION OF US LEGAL SYSTEM  
4370 LAW JUDICIARY SYSTEM  
4380 LAW OBSERV. OF US COURTS/COURT ADM.  
4390 LAW MISCELLANEOUS LAW  
4400 MEDICINE GENERAL MEDICINE  
4401 MEDICINE NEURO-ANATOMY  
4402 MEDICINE NEURO-BIOLOGY  
4408 MEDICINE HEMATOLOGY  
4409 MEDICINE ALLERGY/IMMUNOLOGY  
4410 MEDICINE INTERNSHIP  
4411 MEDICINE ORAL SURGERY  
4412 MEDICINE EMERGENCY MEDICINE  
4413 MEDICINE FAMILY PRACTICE  
4414 MEDICINE PUBLIC HEALTH  
4420 MEDICINE CARDIOLOGY  
4422 MEDICINE CARDIOVASCULAR SURGERY  
4430 MEDICINE CANCER RESEARCH/DIAG/TREATMENT  
4435 MEDICINE PATHO-PHYSIOLOGY  
4440 MEDICINE DENTISTRY

4450	MEDICINE	CLINICAL PHARMACOLOGY
4455	MEDICINE	PSYCHO-PHARMACOLOGY
4456	MEDICINE	BIOMEDICAL SCIENCES
4460	MEDICINE	AEROSPACE MEDICINE
4461	MEDICINE	ANESTHESIOLOGY
4462	MEDICINE	CHILD PSYCHIATRY
4463	MEDICINE	COLON AND RECTAL SURGERY
4464	MEDICINE	DERMATOLOGY
4465	MEDICINE	DIAGNOSTIC RADIOLOGY
4466	MEDICINE	FORENSIC PATHOLOGY
4467	MEDICINE	GENERAL PRACTICE
4468	MEDICINE	INTERNAL MEDICINE
4469	MEDICINE	NEUROLOGY
4470	MEDICINE	NEUROPATHOLOGY
4471	MEDICINE	NEUROSURGERY
4472	MEDICINE	NUCLEAR MEDICINE
4473	MEDICINE	OBSTETRICS & GYNECOLOGY
4474	MEDICINE	OCCUPATIONAL MEDICINE
4475	MEDICINE	OPHTHALMOLOGY
4476	MEDICINE	ORTHOPEDICS
4477	MEDICINE	OTOLARYNGOLOGY
4478	MEDICINE	PATHOLOGY
4479	MEDICINE	PEDIATRIC ALLERGY
4480	MEDICINE	PEDIATRIC CARDIOLOGY
4481	MEDICINE	PEDIATRICS
4482	MEDICINE	PHYSICAL MEDICINE
4483	MEDICINE	PLASTIC SURGERY
4484	MEDICINE	GENERAL PREVENTIVE MEDICINE
4485	MEDICINE	VETERINARY MEDICINE
4486	MEDICINE	PSYCHIATRY & PSYCHOANALYSIS
4487	MEDICINE	RADIOLOGY
4488	MEDICINE	GENERAL SURGERY
4489	MEDICINE	THERAPEUTIC RADIOLOGY
4490	MEDICINE	THORACIC SURGERY
4491	MEDICINE	UROLOGY
4493	MEDICINE	SPEECH PATHOLOGY-THERAPY
4494	MEDICINE	THERAPY & OTHER HEALING
4495	MEDICINE	MEDICAL RESEARCH
4499	MEDICINE	MISCELLANEOUS MEDICINE
4500	MEDICAL ALLIED FIELDS	OBS.OF US MEDICAL INSTITUTIONS
4510	MEDICAL ALLIED FIELDS	NURSING
4520	MEDICAL ALLIED FIELDS	DENTAL TECHNOLOGY
4540	MEDICAL ALLIED FIELDS	PHARMACY
4545	MEDICAL ALLIED FIELDS	AUDIOLOGY/SPEECH PATHOLOGY
4550	MEDICAL ALLIED FIELDS	PHYSICAL THERAPY
4555	MEDICAL ALLIED FIELDS	PSYCHOTHERAPY
4560	MEDICAL ALLIED FIELDS	OCCUPATIONAL THERAPY
4570	MEDICAL ALLIED FIELDS	MEDICAL TECHNOLOGY
4580	MEDICAL ALLIED FIELDS	OPTOMETRY
4581	MEDICAL ALLIED FIELDS	CHIROPRACTIC & OSTEOPATHY

4582 MEDICAL ALLIED FIELDS MEDICAL RECORDS  
4583 MEDICAL ALLIED FIELDS LABORATORY MANAGEMENT  
4600 PUBLIC HEALTH GENERAL PUBLIC HEALTH  
4610 PUBLIC HEALTH COMMUNITY HEALTH PROBS & MED.  
4620 PUBLIC HEALTH FAMILY PLANNING  
4630 PUBLIC HEALTH INTERNATIONAL HEALTH  
4640 PUBLIC HEALTH DRUG ABUSE  
4650 PUBLIC HEALTH HOSPITAL ADMINISTRATION  
4660 PUBLIC HEALTH SANITATION  
4670 PUBLIC HEALTH OBSERV.OF US HEALTH FACILITIES  
4690 PUBLIC HEALTH MISCELLANEOUS PUBLIC HEALTH  
4700 MILITARY SCIENCE GENERAL MILITARY SCIENCE  
4710 MILITARY SCIENCE MILITARY POLICY  
4790 MILITARY SCIENCE MISCELLANOUS MILITARY SCIENCE  
4800 SOCIAL WORK GENERAL SOCIAL WORK  
4810 SOCIAL WORK CASE WORK  
4820 SOCIAL WORK GROUP WORK  
4830 SOCIAL WORK PSYCHOLOGICAL-SOCIAL WORK  
4840 SOCIAL WORK PUBLIC WELFARE  
4850 SOCIAL WORK REHABILITATION  
4860 SOCIAL WORK SOCIAL SERVICES  
4870 SOCIAL WORK CLINICAL SOCIAL WORK  
4880 SOCIAL WORK FOSTER CARE,HALF-WAY HOUSES  
4890 SOCIAL WORK MISCELLANEOUS SOCIAL WORK  
4900 PUBLIC ADMIN. GENERAL PUBLIC ADMINISTRATION  
4910 PUBLIC ADMIN. THEORY OF PUBLIC ADMIN.  
4920 PUBLIC ADMIN. PUBLIC PERSONNEL SYSTEMS  
4940 PUBLIC ADMIN. PUBLIC SAFETY  
4950 PUBLIC ADMIN. PUBLIC RELATIONS  
4990 PUBLIC ADMIN. MISC. PUBLIC ADMINISTRATION  
5000 EDUCATION GENERAL EDUCATION  
5001 EDUCATION EDUCATION, ART  
5010 EDUCATION INTERDISCIPL.STUDIES IN POLICY  
5020 EDUCATION EDUCATIONAL THEORY  
5021 EDUCATION COMPARATIVE EDUCATION  
5022 EDUCATION INTERNATIONAL EDUCATION  
5030 EDUCATION US EDUCATIONAL SYSTEM  
5040 EDUCATION OSB OF US EDUC INSTITUTIONS  
5050 EDUCATION EDUCATL PROGRAM DEVELOPMENT  
5060 EDUCATION HIGH SCHOOL/SECONDARY STUDIES  
5070 EDUCATION TEACHING  
5071 EDUCATION PRIMARY LEVEL TEACHING  
5072 EDUCATION SECONDARY LEVEL TEACHING  
5073 EDUCATION UNIV SCI/MATH/ENG/TECH.TEACH'G  
5074 EDUCATION AGRICULTURAL SCHOOL TEACHING  
5075 EDUCATION UNIV.LEVEL EDUCATION TEACHING  
5076 EDUCATION UNI.SOC SCI/LIT/LIB ARTS TEACH  
5077 EDUCATION MEDICAL SCHOOL TEACHING  
5078 EDUCATION LAW SCHOOL TEACHING  
5079 EDUCATION VOCAT/TECH. SCHOOL TEACHING

*Interface Control Document for the  
Student and Exchange Visitor Information System*

---

5080	EDUCATION	READING, COMPREHENSION
5090	EDUCATION	MISCELLANEOUS EDUCATION
5100	EDUCATION	PHYSICAL EDUCATION
5110	EDUCATION	HEALTH EDUCATION
5120	EDUCATION	TEACH'G ENGLISH AS A FOR.LANG.
5121	EDUCATION	LANGUAGE TEACHING-AFRICAN
5122	EDUCATION	LANGUAGE TEACHING-EAST ASIAN
5123	EDUCATION	LANGUAGE TEACHING-NEAR EASTERN
5124	EDUCATION	LANGUAGE TEACHING-WEST EUROPE
5125	EDUCATION	LANGUAGE TEACHING-EAST EUROPE
5126	EDUCATION	LANGUAGE TEACHING-CLASSICS
5127	EDUCATION	LANGUAGE TEACHING-AMERICAN
5129	EDUCATION	LANGUAGE TEACHING-GEN.METHOD.
5130	EDUCATION	STUDENT ACTIVITIES
5140	EDUCATION	EDUC.OF EXCEPTIONAL CHILDREN
5141	EDUCATION	EDUC. OF CULT. DISADVANTAGED
5142	EDUCATION	EDUCATION OF THE DEAF
5143	EDUCATION	EDUC. OF EMOTIONALLY DISTURBED
5145	EDUCATION	EDUCATION OF MENTALLY RETARDED
5147	EDUCATION	EDUC OF PHYSICALLY HANDICAPPED
5148	EDUCATION	EDUC OF VISUALLY HANDICAPPED
5149	EDUCATION	NON-FORMAL EDUCATION
5150	EDUCATION	ADULT EDUCATION
5151	EDUCATION	OBS.OF US ADULT ED.FACILITIES
5200	EDUCATIONAL ADMIN.	GENERAL ADMIN
5210	EDUCATIONAL ADMIN.	INSTITUTE PLANNING&DEVELOPMENT
5220	EDUCATIONAL ADMIN.	ACCOUNTING
5221	EDUCATIONAL ADMIN.	EDUCATION STATISTICS & RESEARC
5240	EDUCATIONAL ADMIN.	PERSONNEL (EDUCATIONAL)
5250	EDUCATIONAL ADMIN.	REGISTRAR SERVICES
5260	EDUCATIONAL ADMIN.	PRIMARY SCHOOL ADMINISTRATION
5270	EDUCATIONAL ADMIN.	SECONDARY SCHOOL ADMIN,
5271	EDUCATIONAL ADMIN.	VOCAT/TECHICAL SCHOOL ADMIN.
5280	EDUCATIONAL ADMIN.	COLLEGE AND UNIVERSITY ADMIN.
5281	EDUCATIONAL ADMIN.	COMMUNITY COLLEGE ADMIN.
5290	EDUCATIONAL ADMIN.	CURRICULUM
5300	EDUCATIONAL TECHNOLOGY	GENERAL EDUCATIONAL TECHNOLOGY
5310	EDUCATIONAL TECHNOLOGY	PROGRAMMED LEARNING
5315	EDUCATIONAL TECHNOLOGY	TV/RADIO PROGRAMS FOR CHILDREN
5320	EDUCATIONAL TECHNOLOGY	EDUCATIONAL TV AND RADIO
5340	EDUCATIONAL TECHNOLOGY	AUDIO VISUAL AIDS
5390	EDUCATIONAL TECHNOLOGY	MISC. EDUCATIONAL TECHNOLOGY
5400	EDUCATION, TEACH TRNG	TEACHER TRAINING, GENERAL
5410	EDUCATION, TEACH TRNG	TEACHING METHODOLOGY
5420	EDUCATION, TEACH TRNG	MATHEMATICS TEACHER TRAINING
5430	EDUCATION, TEACH TRNG	SCIENCE TEACHER TRAINING
5450	EDUCATION, TEACH TRNG	SOCIAL SCIENCE TEACHER TRAININ
5460	EDUCATION, TEACH TRNG	PRACTICE TEACHING
5470	EDUCATION, TEACH TRNG	EARLY CHILDHOOD & ELEM TEACHER
5480	EDUCATION, TEACH TRNG	SECONDARY TEACHER TRAINING



*Interface Control Document for the  
Student and Exchange Visitor Information System*

---

5490	EDUCATION, TEACH TRNG	COLLEGE TEACHER TRAINING
5500	EDUCATIONAL PSYCHOLOGY	GENERAL EDUCAT'L PSYCHOLOGY
5510	EDUCATIONAL PSYCHOLOGY	EDUCAT'L COUNSELING & GUIDANCE
5520	EDUCATIONAL PSYCHOLOGY	TESTS & MEASUREMENTS
5530	EDUCATIONAL PSYCHOLOGY	SPECIAL EDUCATION
5590	EDUCATIONAL PSYCHOLOGY	MISC. EDUCATIONAL PSYCHOLOGY
5600	HOME ECONOMICS	GENERAL HOME ECONOMICS
5610	HOME ECONOMICS	HOME DECORATION & EQUIPMENT
5620	HOME ECONOMICS	CLOTHING AND TEXTILES
5630	HOME ECONOMICS	CONSUMER ECO.& HOME MANAGEMENT
5640	HOME ECONOMICS	FAMILY RELATIONS & CHILD DVLPT
5650	HOME ECONOMICS	FOODS AND NUTRITION
5660	HOME ECONOMICS	INSTITUT'L&CAFETERIA MANAGEM'T
5670	HOME ECONOMICS	INSTITUT'L FOOD PREP &CATERING
5700	LIBRARY SCIENCE	GENERAL LIBRARY SCIENCE
5720	LIBRARY SCIENCE	CATALOGING SYSTEMS
5730	LIBRARY SCIENCE	LIBRARY ADMINISTRATION
5740	LIBRARY SCIENCE	ELECTRONIC DATA STORAGE
5750	LIBRARY SCIENCE	ARCHIVES
5760	LIBRARY SCIENCE	LIBRARY SCIENCE, NON-PRINT
5790	LIBRARY SCIENCE	MISCELLANOUS LIBRARY SCIENCE
5950	AQUACULTURE	AQUACULTURE, GENERAL
6000	AGRICULTURE	GENERAL AGRICULTURE
6020	AGRICULTURE	AGRICULTURAL DEVELOPMENT
6030	AGRICULTURE	OBSERVATION OF US AGRICULTURE
6040	AGRICULTURE	FOOD PREPARATION
6041	AGRICULTURE	FOOD PROCESSING
6050	AGRICULTURE	AGRICULTURAL BUSINESS
6090	AGRICULTURE	MISCELLANEOUS AGRICULTURE
6100	AGRONOMY	GENERAL AGRONOMY
6110	AGRONOMY	CROP BREEDING/HYBRIDS
6120	AGRONOMY	CROP MANAGEMENT
6130	AGRONOMY	FIELD CROPS
6140	AGRONOMY	HORTICULTURE
6160	AGRONOMY	SOIL ANALYSIS
6161	AGRONOMY	FERTILITY
6170	AGRONOMY	PEST CONTROL/INSECTS/PARASITES
6180	AGRONOMY	WEED CONTROL
6190	AGRONOMY	MISCELLANEOUS AGRONOMY
6200	ANIMAL HUSBANDRY	GENERAL ANIMAL HUSBANDRY
6210	ANIMAL HUSBANDRY	LARGE ANIMAL HUSBANDRY
6220	ANIMAL HUSBANDRY	POULTRY
6230	ANIMAL HUSBANDRY	SMALL ANIMAL HUSBANDRY
6250	ANIMAL HUSBANDRY	DAIRY PRODUCTION
6290	ANIMAL HUSBANDRY	MISCELLANEOUS ANIMAL HUSBANDRY
6300	AGRICULTURE, OTHER	OTHER AGRICULTURE, GENERAL
6305	AGRICULTURE, OTHER	AQUACULTURE
6310	AGRICULTURE, OTHER	FISH-SALT WATER
6320	AGRICULTURE, OTHER	FISHERIES-FRESH WATER
6330	AGRICULTURE, OTHER	FORESTRY

6340 AGRICULTURE, OTHER RANGE MANAGEM T  
6350 AGRICULTURE, OTHER WILD LIFE  
6390 AGRICULTURE, OTHER OTHER AGRICULTURE, MISC  
6400 FARMING GENERAL FARMING  
6420 FARMING FARM MANAGEMENT  
6430 FARMING EXTENSION SERVICES  
6440 FARMING IRRIGATION  
6450 FARMING FERTILIZER USE  
6460 FARMING FARM MACHINERY  
6470 FARMING FARMING MARKETING  
6500 RURAL EDUCATION GENERAL RURAL EDUCATION  
6510 RURAL EDUCATION PRIMARY AGRICULTURAL EDUCATION  
6511 RURAL EDUCATION RURAL SECONDARY EDUCATION  
6520 RURAL EDUCATION PROFESSIONAL AGRICULT. EDUCAT.  
6530 RURAL EDUCATION COMMUNITY DEVELOPMENT  
6540 RURAL EDUCATION FARM COOPERATIVES  
6590 RURAL EDUCATION MISCELLANEOUS RURAL EDUCATION  
6600 ENVIRONMENT/CONSERVATION GENERAL CONSERVATION  
6610 ENVIRONMENT/CONSERVATION WATER  
6611 ENVIRONMENT/CONSERVATION DESALINIZATION OF WATER  
6620 ENVIRONMENT/CONSERVATION WATER POLLUTION  
6630 ENVIRONMENT/CONSERVATION AIR POLLUTION  
6640 ENVIRONMENT/CONSERVATION SOIL CONSERVATION  
6650 ENVIRONMENT/CONSERVATION NATIONAL PARKS  
6651 ENVIRONMENT/CONSERVATION PARKS & RECREATION MANAGEMENT  
6660 ENVIRONMENT/CONSERVATION ENVIRONMENTAL STUDIES  
6690 ENVIRONMENT/CONSERVATION NATURAL RESOURCES  
6692 ENVIRONMENT/CONSERVATION REMOTE SENSING  
6700 URBAN STUDIES GENERAL URBAN STUDIES  
6710 URBAN STUDIES URBAN DEVELOPMENT & PLANNING  
6720 URBAN STUDIES CITY RENEWAL  
6790 URBAN STUDIES MISCELLANEOUS URBAN STUDIES  
7000 AREA STUDIES GENERAL AREA STUDIES  
7010 AREA STUDIES AMERICAN STUDIES  
7020 AREA STUDIES AMERICAN INDIAN STUDIES  
7040 AREA STUDIES ANGLO-AMERICAN STUDIES  
7050 AREA STUDIES CANADIAN-AMERICAN STUDIES  
7060 AREA STUDIES MISCELLANEOUS AMERICAN STUDIES  
7100 AREA STUDIES AFRO-AMERICAN STUDIES  
7110 AREA STUDIES OBSERV. OF AFRO-AM ACTIV&ORGAN  
7120 AREA STUDIES BLACK COLLEGES  
7130 AREA STUDIES MEXICAN-AMERICAN CULT.STUDIES  
7210 AREA STUDIES AFRICAN STUDIES  
7215 AREA STUDIES NORTH AFRICAN STUDIES  
7220 AREA STUDIES EAST ASIAN & PAC STUDIES  
7225 AREA STUDIES MIDDLE EAST STUDIES  
7230 AREA STUDIES SOUTH ASIAN STUDIES  
7240 AREA STUDIES SOUTH EAST ASIAN STUDIES  
7250 AREA STUDIES EAST EUROPEAN STUDIES  
7260 AREA STUDIES WEST EUR.(INCL.CANADA) STUDIES

7270 AREA STUDIES SOUTH AMERICAN STUDIES  
7280 AREA STUDIES NEAR EASTERN STUDIES  
7281 AREA STUDIES ISLAMIC STUDIES  
7290 AREA STUDIES MISCELLANEOUS AREA STUDIES  
7400 INTERNATIONAL RELAT. GENERAL INTERNAT'L RELATIONS  
7410 INTERNATIONAL RELAT. INTERNATIONAL ORGANIZATIONS  
7411 INTERNATIONAL RELAT. INTERNATIONAL PUBLIC SERVICE  
7420 INTERNATIONAL RELAT. FOREIGN POLICY  
7421 INTERNATIONAL RELAT. ALLIANCES  
7422 INTERNATIONAL RELAT. ARMS CONTROL  
7430 INTERNATIONAL RELAT. EAST-WEST RELATIONS  
7431 INTERNATIONAL RELAT. AFRICAN-US RELATIONS  
7432 INTERNATIONAL RELAT. EAST ASIA/PACIFIC/AUST-US RELS  
7433 INTERNATIONAL RELAT. SOUTH ASIA-US RELATIONS  
7434 INTERNATIONAL RELAT. SOUTH EAST ASIA-US RELATIONS  
7435 INTERNATIONAL RELAT. EASTERN EUROPE-US RELATIONS  
7436 INTERNATIONAL RELAT. WEST EUR(INCL.CANADA)-US RELS  
7437 INTERNATIONAL RELAT. SOUTH-AMERICAN - US RELATIONS  
7438 INTERNATIONAL RELAT. NEAR EASTERN-US RELATIONS  
7490 INTERNATIONAL RELAT. MISCELLANEOUS INT'L RELATIONS  
8000 LANGUAGES LANGUAGES  
8020 LANGUAGES AFRICAN LANGS & LITERATURE  
8030 LANGUAGES CLASSICAL LANGS & LIT.  
8040 LANGUAGES EAST ASIAN LANGS & LIT.  
8045 LANGUAGES ENGLISH  
8050 LANGUAGES GERMANIC LANGUAGES & LIT.  
8051 LANGUAGES SCANDINAVIAN LANGS & LIT.  
8060 LANGUAGES NEAR EASTERN LANGS & LIT.  
8070 LANGUAGES EAST EUROPEAN LANGS & LIT.  
8080 LANGUAGES ROMANCE LANGS & LIT.  
8081 LANGUAGES FRENCH LANG & LIT  
8082 LANGUAGES SPANISH LANG & LIT  
8083 LANGUAGES PORTUGUESE LANG & LIT  
8084 LANGUAGES ITALIAN LANG & LIT  
8090 LANGUAGES MISCELLANOUS LANGUAGES  
8100 LANGUAGES LINGUISTICS  
8105 LANGUAGES PHILOLOGY  
8110 LANGUAGES LANGUAGE THEORY  
8120 LANGUAGES AMERICAN ENGLISH  
8130 LANGUAGES AMERICAN INDIAN LANGUAGES  
8140 LANGUAGES INTERPRETING/TRANSLATING  
9000 TOURISM GENERAL TOURISM  
9010 TOURISM TOURISM AND TRAVEL  
9020 TOURISM HOTEL & RESORT ADMINISTRATION  
9030 TOURISM GUEST OF GOVERNMENT  
9040 TOURISM MISCELLANEOUS TOURISM  
9100 GENERAL OBSERVATION ORIENTATION  
9110 GENERAL OBVERVATION CONSULTATION  
9120 GENERAL OBSERVATION CONFERENCE ATTENDANCE  
9130 GENERAL OBSERVATION WOMEN ACTIVITIES & ORGS.

9140	GENERAL OBSERVATION	OBS.OF YOUTH ACTIVITIES & ORGS
9200	TRAINING	PEACE CORPS/COMM.DEVT TRAINING
9210	TRAINING	WORK CAMP PROJECTS
9220	TRAINING	SPECIAL TRAINING
9230	TRAINING	BUSINESS & COMMERCIAL TRAINING
9231	TRAINING	BANKING & FINANCIAL TRAINING
9232	TRAINING	SECRETARIAL TRAINING
9233	TRAINING	PHOTOGRAPHIC TRAINING
9234	TRAINING	COMMUNIC. & BROADCASTING TRNG
9235	TRAINING	PRINTING & LITHOGRAPHIC TRNG
9236	TRAINING	TRANSPORT. & PUBL.UTILITY TRNG
9238	TRAINING	AERONAUTICAL & AVIATION TRNG
9239	TRAINING	ENGRNG/ARCHITECTURAL DRAFTING
9240	TRAINING	AUTOMOTIVE(& MECHANIC)TRAINING
9242	TRAINING	WELDING
9243	TRAINING	ELECTRONICS TRAINING
9244	TRAINING	ELECTROMECHANICAL TRAINING
9245	TRAINING	INDUSTRIAL TRAINING
9246	TRAINING	TEXTILE TECHNOLOGY TRAINING
9248	TRAINING	MECHANICAL TRAINING
9250	TRAINING	CONSTRUCTION & BUILDING TRADES
9251	TRAINING	AGRICULTURAL TRAINING
9252	TRAINING	FORESTRY & WILDLIFE TRAINING
9253	TRAINING	MARINE & OCEANOGRAPHIC TRNG
9254	TRAINING	LABORATORY TECHNOLOGY TRAINING
9255	TRAINING	SANITATION & PUB. HEALTH INS.
9256	TRAINING	LIBRARY ASSISTANT TRAINING
9257	TRAINING	POLICE,LAW ENFORCEM'T&CORREC.
9258	TRAINING	PILOT TRAINING
9259	TRAINING	CONSTRUCT. MACHINE OPERAT.TRNG
9260	TRAINING	REPAIR & MAINTEN.TECH. TRNG
9270	TRAINING	OBSER.OF TRNG PROGS&FACILITIES
9300	SPORTS	GENERAL SPORTS
9400	BICENTENNIAL PROJECTS	BICENTENNIAL PROJECTS
9500	EDUC. & CULT. EXCHANGES	OPERATION OF EXCHANGE PROGRAMS
9505	EDUC. & CULT. EXCHANGES	GRANT PROGRAMS-GOVT SPONSOR
9510	EDUC. & CULT. EXCHANGES	GRANT PROGRAMS-PRIVATE SPONSOR
9515	OTHERS	MISSING REPORT
9999	OTHER	NO REPORT

**Table E: Agency Codes for Government Agencies**

<u>Code</u>	<u>Agency</u>
ACT	ACTION (INCLUDING PEACE CORPS)
AEC	ATOMIC ENERGY COMMISSION
AID	AGENCY FOR INT'L DEVELOPMENT
COM	DEPARTMENT OF COMMERCE
CU	DEPARTMENT OF STATE - CU
DEA	DRUG ENFORCEMENT ADMIN.

DOD	DEPARTMENT OF DEFENSE
DOE	DEPARTMENT OF ENERGY
DOT	DEPARTMENT OF TRANSPORTATION
ECA	UN ECO.COMMISSION FOR AFRICA
ECAFE	UN ECO.COM.FOR ASIA & FAR EAST
ECE	UN ECO.COMMISSION FOR EUROPE
ECLA	UN ECO. COM. FOR LATIN AMERICA
ECOSOC	U.N. ECONOMIC & SOCIAL COUNCIL
EEC	EUROPEAN ECONOMIC COMMUNITY
EPA	ENVIRONMENTAL PROTECT. AGENCY
ERDA	ENERGY RESEARCH & DVLPT.ADMIN.
EXIM	EXPORT-IMPORT BANK OF THE U.S.
FAO	UN FOOD & AGRICULTURE ORGANIZ.
FDA	FOOD & DRUG ADMINISTRATION
HEW	DEPT.OF HEALTH,EDUCAT.&WELFARE
HHS	DEPT. OF HEALTH & HUMAN SERVIC
HUD	DEPT.OF HOUSING & URBAN DVLPT.
IAEA	INT'L ATOMIC ENERGY AGENCY
IBRD	INT'L BANK FOR RECONSTR.&DVPLT
ICA	INTERNATIONAL COMMUNICATION AG
ICAO	INT'L CIVIL AVIATION ORGANIZ.
IDB	INTER-AMERICAN DVLPT BANK
ILO	INT'L LABOR ORGANIZATION
IMCO	INTER-GOV'TAL MARIT.CONSUL.ORG
IMF	INTERNATIONAL MONETARY FUND
INT	DEPARTMENT OF THE INTERIOR
ITU	INT'L TELECOMMUNICATIONS UNION
LAB	DEPARTMENT OF LABOR
MISC	UNSPECIFIED FEDERAL AGENCY
MISCI	UNSPECIFIED INT'L ORGANIZATION
NAS	NATIONAL ACADEMY OF SCIENCE
NASA	NAT'L AERONAUTICS&SPACE ADMIN.
NATO	NORTH ATLANTIC TREATY ORGANIZ.
NBS	NAT'L BUREAU OF STANDARDS
NFAH	NAT'L FDN ON THE ARTS & HUMAN.
NIH	NATIONAL INSTITUTES OF HEALTH
NPS	NATIONAL PARK SERVICE
NSF	NATIONAL SCIENCE FOUNDATION
OAS	ORGANIZ. OF AMERICAN STATES
OAU	ORGANIZATION OF AFRICAN UNITY
OECD	ORGANIZ.FOR ECO.COOP & DVLPT.
OPIC	OVERSEAS PRIVATE INVEST.CORP.
PAHO	PAN-AMERICAN HEALTH ORGANIZ.
SI	SMITHSONIAN INSTITUTION
STATE	DEPT.OF STATE (OTHER THAN CU)
UN	UNITED NATIONS
UNCTAD	U.N. CONF. ON TRADE & DVLPT.
UNDP	U.N. DEVELOPMENT PROGRAM
UNESCO	U.N. EDUC.,SCIENTIFIC&CULT.ORG.
UNICEF	U.N. CHILDREN'S FUND

UNIDO	UN INDUSTRIAL DVLPT.ORGANIZ.
USDA	DEPARTMENT OF AGRICULTURE
USIA	U.S. INFORMATION AGENCY
VA	VETERANS ADMINISTRATION
WHO	WORLD HEALTH ORGANIZATION
WMO	WORLD METEOROLOGICAL ORGANIZ.

**Table F: Organization Codes for International Organizations**

<u>Code</u>	<u>Organization</u>
ECA	U.N. ECONOMIC COMMISSION FOR AFRICA
ECE	U.N. ECONOMIC COMMISSION FOR EUROPE
ECLA	U.N. ECONOMIC COMMISSION FOR LATIN AMERICA
ECOSOC	U.N. ECONOMIC & SOCIAL COUNCIL
EEC	EUROPEAN ECONOMIC COMMUNITY (COMMON MARKET)
ESCAP	U.N. ECONOMIC COMMISSION FOR ASIA & FAR EAST
FAO	U.N. FOOD & AGRICULTURE ORGANIZATION
IAEA	INTERNATIONAL ATOMIC ENERGY AGENCY
IBRD	INTERNATIONAL BANK FOR RECONSTRUCTION & DEVT
ICAO	INTERNATIONAL CIVIL AVIATION ORGANIZATION
IDB	INTER-AMERICAN DEVELOPMENT BANK
ILO	INTERNATIONAL LABOR ORGANIZATION
IMCO	INTER-GOVERNMENTAL MARITIME CONSULTATIVE ORGAN'N
IMF	INTERNATIONAL MONETARY FUND
ITU	INTERNATIONAL TELECOMMUNICATIONS UNION
MISC	OTHER INTERNATIONAL ORGANIZATIONS
NATO	NORTH ATLANTIC TREATY ORGANIZATION
OAS	ORGANIZATION OF AMERICAN STATES
OAU	ORGANIZATION OF AFRICAN UNITY
OECD	ORGANIZATION FOR ECONOMIC COOPERATION & DEVT
PAHO	PAN AMERICAN HEALTH ORGANIZATION
UN	UNITED NATIONS
UNCTAD	U.N. CONFERENCE OF TRADE & DEVELOPMENT
UNDP	U.N. DEVELOPMENT PROGRAM
UNESCO	U.N. EDUCATIONAL, SCIENTIFIC & CULTURAL ORGAN'N
UNICEF	U.N. CHILDREN'S FUND
UNIDO	U.N. INDUSTRIAL DEVELOPMENT ORGANIZATION
WHO	WORLD HEALTH ORGANIZATION
WMO	WORLD METEOROLOGICAL ORGANIZATION

**Table G: Dependent Relationship**

<u>Code</u>	<u>Relationship</u>
C	Child
GM	Grandmother
SP	Spouse
GF	Grandfather
SC	Stepchild

SM	Stepmother
A	Aunt
U	Uncle
NI	Niece
NE	Nephew
CO	Cousin
GC	Grandchild
UNK	Unknown

**Table H: Form Purpose**

<u>Code</u>	<u>Purpose</u>
1	Begin a new program
2	Extend an on-going program
3	Transfer to a different program
4	Replace and amend previous form
5	Permit visitor's immediate family to enter U.S. separately
6	Reinstatement request to U.S. Department of State
7	Correct a Minor or Technical Infraction

## 4.4 Sample SEVIS XML File for Upload

```
<?xml version="1.0"?>
<!DOCTYPE SEVBatch SYSTEM "sevis.dtd">

<SEVBatch>
  <!-- (Header , (Batch_Upload | (Batch_Download , Tran_Log ) ) )-->
  <Header>
    <!-- (Transaction_Code , Batch_ID , Submitter )-->
    <Transaction_Code>CTL-214F-0087-000</Transaction_Code>
    <Batch_ID>
      <!-- (Submit_Date , Transaction_Num , Seq_Num )-->
      <Submit_Date>11/14/2001</Submit_Date>
      <Transaction_Num>1000000001</Transaction_Num>
    </Batch_ID>
    <Submitter>
      <!-- (First_Name , Middle_Name? , Last_Name , User_Name )-->
      <First_Name>ROSE</First_Name>
      <Middle_Name>M</Middle_Name>
      <Last_Name>TROUBLE</Last_Name>
      <User_Name>OANDR71392</User_Name>
    </Submitter>
  </Header>
  <Batch_Upload>
    <!-- (Student_Data* , Student_Data_Change* , EV_Data* , EV_Data_Change*
) -->
    <Student_Data>
      <!-- (Sevis_Id , Create_Date , DSO_ID , Biographic_Info ,
Foreign_Address? , US_Address , US_Phone_Num? , Student_Program ,
Eng_Proficiency , Financial_Info , Dependent? , Eligibility_Form )-->
      <Sevis_Id>5000000002</Sevis_Id>
      <Create_Date>11012001</Create_Date>
      <DSO_ID>1000005</DSO_ID>
      <Biographic_Info>
        <!-- (Name , Gender? , Date_Of_Birth , Country_Of_Birth ,
Country_Of_Citizenship , LPR_Country? )-->
        <Name>
          <!-- (First_Name , Middle_Name? , Last_Name )-->
          <First_Name>ERIC</First_Name>
          <Middle_Name>M</Middle_Name>
          <Last_Name>JACK</Last_Name>
        </Name>
        <Gender>M</Gender>
        <Date_Of_Birth>12121980</Date_Of_Birth>
        <Country_Of_Birth>CZECH REPUBLIC</Country_Of_Birth>
        <Country_Of_Citizenship>CZECH REPUBLIC</Country_Of_Citizenship>
        <LPR_Country>CZECH REPUBLIC</LPR_Country>
      </Biographic_Info>
      <Foreign_Address>
        <!-- (Foreign_Address_Line1? , Foreign_Address_Line2? ,
Foreign_City? , Foreign_State_Or_Province? , Foreign_Postal_Code? )-->
        <Foreign_Address_Line1>1000 K.ST</Foreign_Address_Line1>
        <Foreign_Address_Line2/>
        <Foreign_City>GREAT CITY</Foreign_City>
        <Foreign_State_Or_Province>BEST
PROVINCE</Foreign_State_Or_Province>
        <Foreign_Postal_Code>20001</Foreign_Postal_Code>
      </Foreign_Address>
    </Student_Data>
  </Batch_Upload>
</SEVBatch>
```



*Interface Control Document for the  
Student and Exchange Visitor Information System*

---

```
<US_Address>
  <!-- (US_Street1 , US_Street2? , US_City , US_State , US_Zip )-->
  <US_Street1>2000 K.ST</US_Street1>
  <US_Street2/>
  <US_City>WASHINGTON</US_City>
  <US_State>DC</US_State>
  <US_Zip>20001</US_Zip>
</US_Address>
<US_Phone_Num>
  <!-- (Area_Code , Phone_Num , Ext? )-->
  <Area_Code>202</Area_Code>
  <Phone_Num>4145555</Phone_Num>
  <Ext/>
</US_Phone_Num>
<Student_Program>
  <!-- (Program_Dates , Educational_Program , Primary_Major? ,
Secondary_Major? , Remarks? )-->
  <Program_Dates>
    <!-- (Prog_Begin_Date , Prog_End_Date , Enrollment_Date? )-->
    <Prog_Begin_Date>09152001</Prog_Begin_Date>
    <Prog_End_Date>05152004</Prog_End_Date>
    <Enrollment_Date>09112001</Enrollment_Date>
  </Program_Dates>
  <Educational_Program/>
  <Primary_Major>Computer Science</Primary_Major>
  <Secondary_Major/>
  <Remarks>blanks</Remarks>
</Student_Program>
<Eng_Proficiency>
  <!-- (Required , Requirement_Met , Not_Reqd_Reason? )-->
  <Required>Y</Required>
  <Requirement_Met>Y</Requirement_Met>
  <Not_Reqd_Reason/>
</Eng_Proficiency>
<Financial_Info>
  <!-- (Academic_Term_In_Months , Expenses , Funds )-->
  <Academic_Term_In_Months>12</Academic_Term_In_Months>
  <Expenses>
    <!-- (Tuition_Exp , Living_Exp? , Dependent_Exp? ,
Medical_Insurance_Exp? , Other_Exp? , Other_Exp_Desc? )-->
    <Tuition_Exp>10000</Tuition_Exp>
    <Living_Exp>9000</Living_Exp>
    <Dependent_Exp>2000</Dependent_Exp>
    <Medical_Insurance_Exp>200</Medical_Insurance_Exp>
    <Other_Exp/>
    <Other_Exp_Desc/>
  </Expenses>
  <Funds>
    <!-- (Personal_Fund? , School_Fund? , School_Fund_Desc? ,
Fund_Desc? , Other_Fund_Descr? , Employment? , Employment_Desc? )-->
    <Personal_Fund>20000</Personal_Fund>
    <School_Fund>2000</School_Fund>
    <School_Fund_Desc/>
    <Fund_Desc/>
    <Other_Fund_Descr/>
    <Employment/>
    <Employment_Desc/>
  </Funds>
</Financial_Info>
<Dependent>
```

```
<!-- (Biographic_Info , Relationship )-->
<Biographic_Info>
  <!-- (Name , Gender? , Date_Of_Birth , Country_Of_Birth ,
Country_Of_Citizenship , LPR_Country? )-->
  <Name>
    <!-- (First_Name , Middle_Name? , Last_Name )-->
    <First_Name>ERIC</First_Name>
    <Middle_Name>M</Middle_Name>
    <Last_Name>JACK</Last_Name>
  </Name>
  <Gender>M</Gender>
  <Date_Of_Birth>12121980</Date_Of_Birth>
  <Country_Of_Birth>CZECH REPUBLIC</Country_Of_Birth>
  <Country_Of_Citizenship>CZECH REPUBLIC</Country_Of_Citizenship>
  <LPR_Country>CZECH REPUBLIC</LPR_Country>
</Biographic_Info>
<Relationship/>
</Dependent>
<Eligibility_Form>
  <!-- (Purpose? )-->
  <Purpose>use by new student for entering the United
States</Purpose>
</Eligibility_Form>
</Student_Data>
</Batch_Upload>
</SEVBatch>
```

## 4.5 Sample SEVIS XML File for Download

```
<?xml version="1.0"?>
<!DOCTYPE SEVBatch SYSTEM "sevis.dtd">
<SEVBatch>
  <!-- (Header , (Batch_Upload | (Batch_Download , Tran_Log ) ) )-->
  <Header>
    <!-- (Transaction_Code , Batch_ID , Submitter )-->
    <Transaction_Code>CTL-214F-0087-000</Transaction_Code>
    <Batch_ID>
      <!-- (Submit_Date , Transaction_Num , Seq_Num )-->
      <Submit_Date>11/14/2001</Submit_Date>
      <Transaction_Num>1000000001</Transaction_Num>
    </Batch_ID>
    <Submitter>
      <!-- (First_Name , Middle_Name? , Last_Name, User_Name)-->
      <First_Name>ERIC</First_Name>
      <Middle_Name>K</Middle_Name>
      <Last_Name>JACK </Last_Name>
      <User_Name>OANDR71392</User_Name>
    </Submitter>
  </Header>
  <Batch_Download>
    <!-- (Recs_Processed , Recs_In_Err , Student_Data* , EV_Data* , Barcode
) -->
    <Recs_Processed>1</Recs_Processed>
    <Recs_In_Err>0</Recs_In_Err>
    <Student_Data>
```

*Interface Control Document for the  
Student and Exchange Visitor Information System*

---

```
<!-- (Sevis_Id , Create_Date , DSO_ID , Biographic_Info ,
Foreign_Address? , US_Address , US_Phone_Num? , Student_Program ,
Eng_Proficiency , Financial_Info , Dependent? , Eligibility_Form )-->
<Sevis_Id>5000000002</Sevis_Id>
<Create_Date>11012001</Create_Date>
<DSO_ID>1000005</DSO_ID>
<Barcode>5000000002I-20PRI</Barcode>
<Biographic_Info>
  <!-- (Name , Gender? , Date_Of_Birth , Country_Of_Birth ,
Country_Of_Citizenship , LPR_Country? )-->
  <Name>
    <!-- (First_Name , Middle_Name? , Last_Name )-->
    <First_Name>ERIC</First_Name>
    <Middle_Name>M</Middle_Name>
    <Last_Name>JACK</Last_Name>
  </Name>
  <Gender>M</Gender>
  <Date_Of_Birth>12121980</Date_Of_Birth>
  <Country_Of_Birth>CZECH REPUBLIC</Country_Of_Birth>
  <Country_Of_Citizenship>CZECH REPUBLIC</Country_Of_Citizenship>
  <LPR_Country>CZECH REPUBLIC</LPR_Country>
</Biographic_Info>
<Foreign_Address>
  <!-- (Foreign_Address_Line1? , Foreign_Address_Line2? ,
Foreign_City? , Foreign_State_Or_Province? , Foreign_Postal_Code? )-->
  <Foreign_Address_Line1>1000 K.ST</Foreign_Address_Line1>
  <Foreign_Address_Line2/>
  <Foreign_City>GREAT CITY</Foreign_City>
  <Foreign_State_Or_Province>BEST
PROVINCE</Foreign_State_Or_Province>
  <Foreign_Postal_Code>20001</Foreign_Postal_Code>
</Foreign_Address>
<US_Address>
  <!-- (US_Street1 , US_Street2? , US_City , US_State , US_Zip )-->
  <US_Street1>2000 K.ST</US_Street1>
  <US_Street2/>
  <US_City>WASHINGTON</US_City>
  <US_State>DC</US_State>
  <US_Zip>20001</US_Zip>
</US_Address>
<US_Phone_Num>
  <!-- (Area_Code , Phone_Num , Ext? )-->
  <Area_Code>202</Area_Code>
  <Phone_Num>4145555</Phone_Num>
  <Ext/>
</US_Phone_Num>
<Student_Program>
  <!-- (Program_Dates , Educational_Program , Primary_Major? ,
Secondary_Major? , Remarks? )-->
  <Program_Dates>
    <!-- (Prog_Begin_Date , Prog_End_Date , Enrollment_Date? )-->
    <Prog_Begin_Date>09152001</Prog_Begin_Date>
    <Prog_End_Date>05152004</Prog_End_Date>
    <Enrollment_Date>09112001</Enrollment_Date>
  </Program_Dates>
  <Educational_Program/>
  <Primary_Major>Computer Science</Primary_Major>
  <Secondary_Major/>
  <Remarks>blanks</Remarks>
</Student_Program>
```

*Interface Control Document for the  
Student and Exchange Visitor Information System*

---

```
<Eng_Proficiency>
  <!-- (Required , Requirement_Met , Not_Reqd_Reason? )-->
  <Required>Y</Required>
  <Requirement_Met>Y</Requirement_Met>
  <Not_Reqd_Reason/>
</Eng_Proficiency>
<Financial_Info>
  <!-- (Academic_Term_In_Months , Expenses , Funds )-->
  <Academic_Term_In_Months>12</Academic_Term_In_Months>
  <Expenses>
    <!-- (Tuition_Exp , Living_Exp? , Dependent_Exp? ,
Medical_Insurance_Exp? , Other_Exp? , Other_Exp_Desc? )-->
    <Tuition_Exp>10000</Tuition_Exp>
    <Living_Exp>9000</Living_Exp>
    <Dependent_Exp>2000</Dependent_Exp>
    <Medical_Insurance_Exp>200</Medical_Insurance_Exp>
    <Other_Exp/>
    <Other_Exp_Desc/>
  </Expenses>
  <Funds>
    <!-- (Personal_Fund? , School_Fund? , School_Fund_Desc? ,
Fund_Desc? , Other_Fund_Descr? , Employment? , Employment_Desc? )-->
    <Personal_Fund>20000</Personal_Fund>
    <School_Fund>2000</School_Fund>
    <School_Fund_Desc/>
    <Fund_Desc/>
    <Other_Fund_Descr/>
    <Employment/>
    <Employment_Desc/>
  </Funds>
</Financial_Info>
<Eligibility_Form>
  <!-- (Purpose? )-->
  <Purpose>0</Purpose>
</Eligibility_Form>
</Student_Data>
</Batch_Download>
<Tran_Log><!-- (Result* )-->
  <Result Row_Number = "1"><!-- (Result_Code , Result_Message )-->
    <Result_Code>S000</Result_Code>
    <Result_Message>OK</Result_Message>
  </Result>
</Tran_Log>
</SEVBatch>
```

## **4.6 HTTP Request Parameters**

Batch Upload: SEVIS Username  
SEVIS Password

Batch Download: Username  
Password  
Transaction\_Code  
Transaction\_Num