

Cal-PASS User's Training

San Diego/Imperial Data Sharing Consortium



Presented by
Mary Kay Patton
Cal-PASS Database Administrator

Overview of presentation

- Overview of Cal-PASS
- Database structure
- Preparing data for submission
- Validation program
- Cal-PASS website
- Cal-PASS web application demonstration
- Using Cal-PASS data

Overview and Status of Cal-PASS

- Expansion and new Consortia
- MOU's to date:
 - 631 K-12 schools (41 Districts)
 - 54 Community Colleges (27 Districts)
 - 12 Universities
- New MOU format (one page share list)
- Grant funding till June 2006
- BCP for ongoing funding beginning July 2005

Who is Supporting Cal-PASS?

Funding

Chancellor's Office for the
California Community
Colleges

Grossmont-Cuyamaca
Community College District

Girard Foundation

Endorsements

Senator Alpert
Senator Scott
Assembly Member Lui

The Ed Trust- West

AVID

CSIS

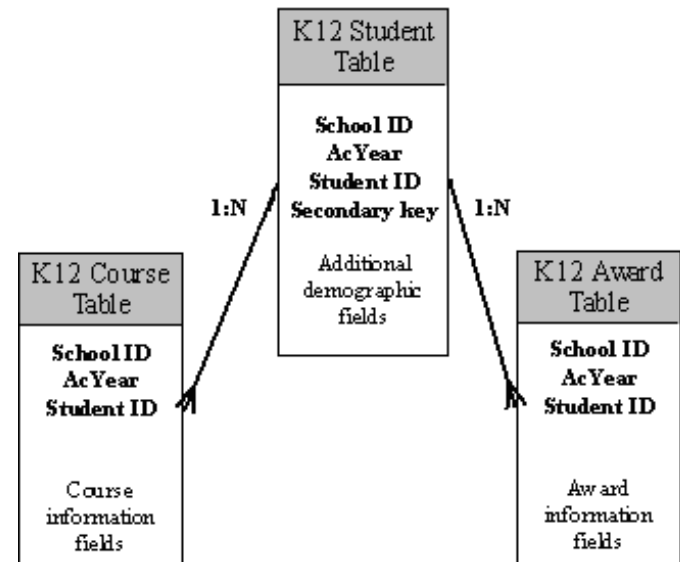
Master Planning Alliance

Changes and Standardization

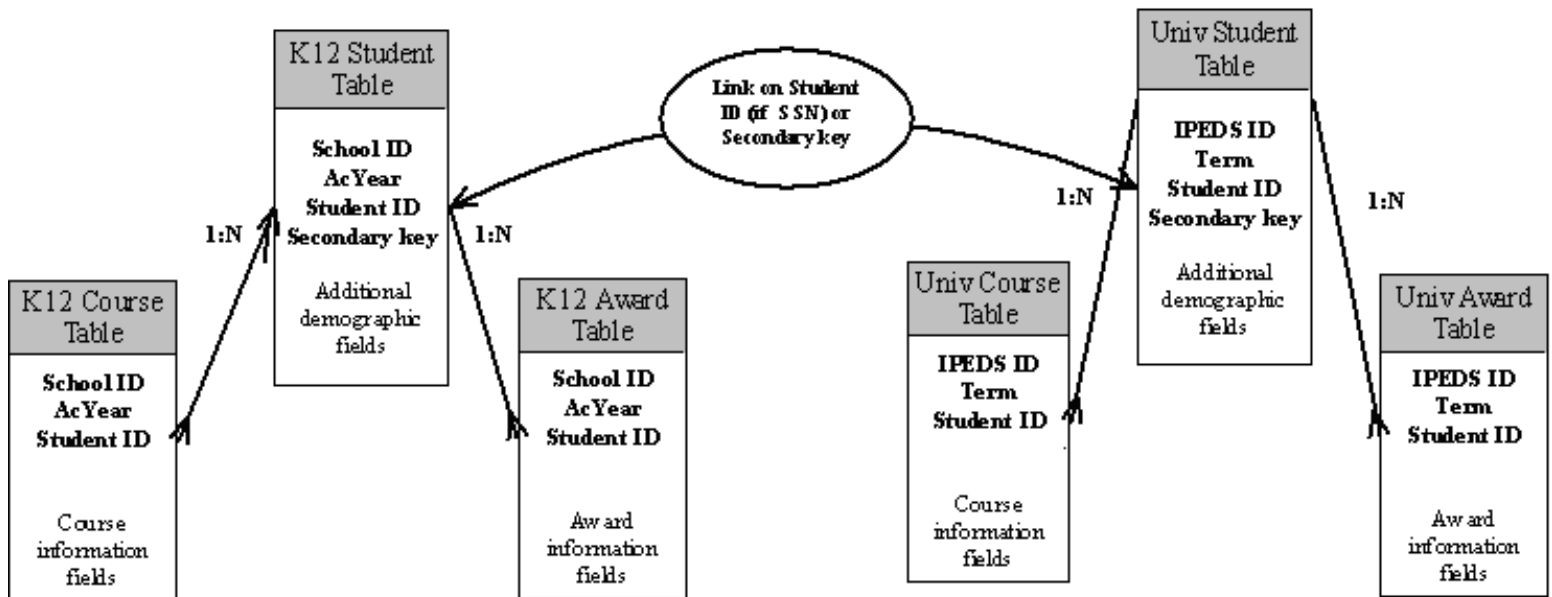
- Single database structure required consistency
- Looked at existing data collection systems
- DED
- Mapped fields to standard values

New Database Structure

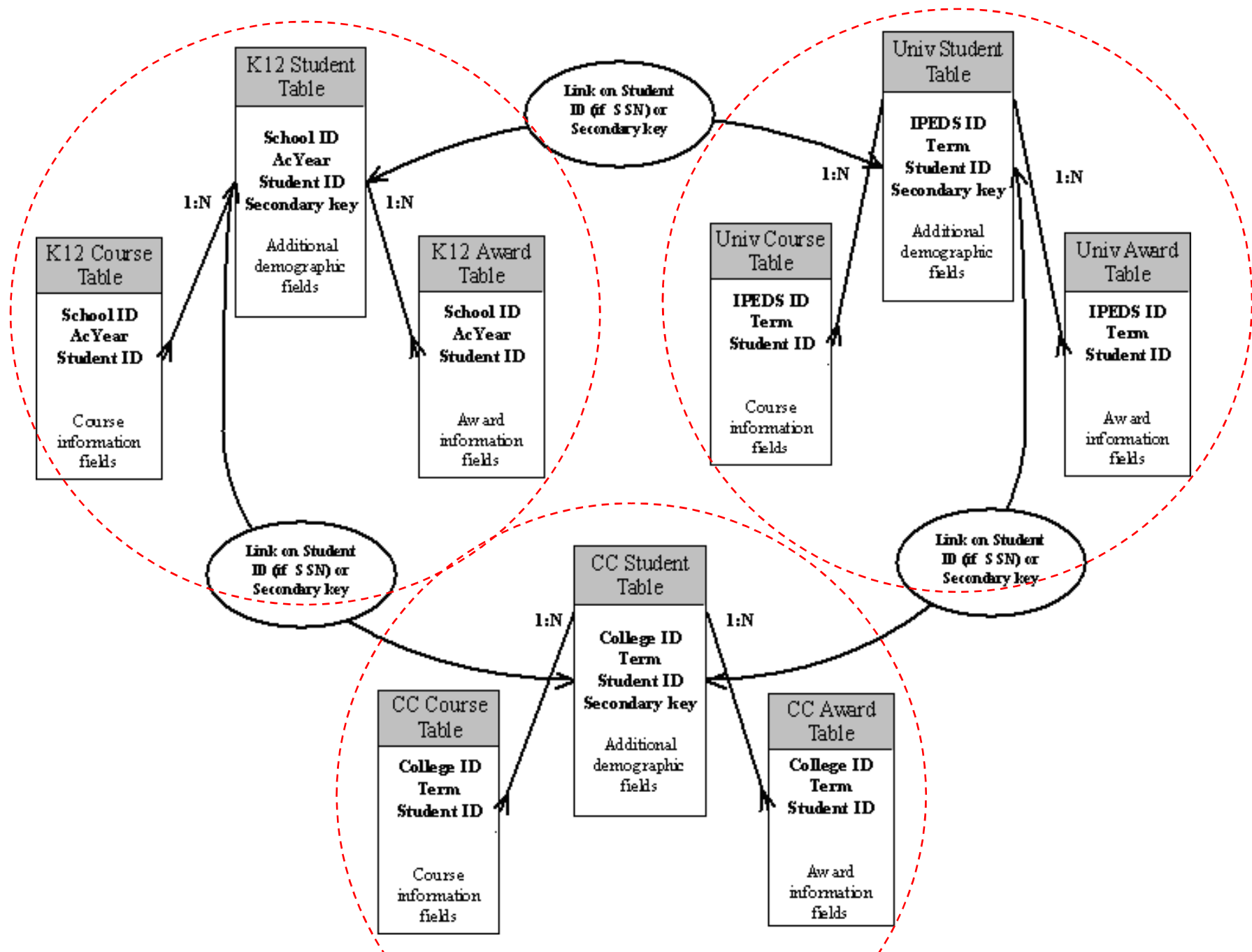
- Each segment has 3 primary files
- Primary key is school ID, academic year and student ID
- One to many relationship
- Must have referential integrity



Linking segment files



Cal-PASS Entity Relationships



Optional Files

- Each Consortium may elect to collect additional elements to meet local needs.
- This Optional file links to the student file using the primary key (school ID, Academic year and student ID)
- Optional files not loaded to production database
- Repository only
- New Optional file structure
- V.2 Validation program will create derived keys and encrypt SSN's

| Optional File |
|----------------------------|
| Standardized Header Fields |
| All optional fields |

Community College First Name File

- Student records prior to Summer 04
- File is sent to Cal-PASS contact at district
 - college ID, term ID, and student ID
- District returns file with first 3 letters of first name appended
- Cal-PASS derived keys are created
- SSN is encrypted
- Cal-PASS data files created and available for download

Data Element SB28

- New data element in Chancellor's Office MIS containing first 3 letters of student's first name
- Submission is optional
 - Cal-PASS members should encourage campus MIS to submit
- Names should not have punctuation
- Spaces should be filled with \$
 - Example: student's first name is Li, submit Li\$

Validation Program

- Runs locally
- Checks validity of data
- Checks referential integrity
 - Student record for every course and award record
- Encrypts SSN
- Creates the derived keys
- Generates output folder with data files ready for upload

Cal-PASS website

- Information Resources
 - Data Element Dictionary
 - Sample MOU
- Data preparation tools
 - Validation program
 - User's Guide
- Link to demo pages
- URL: www.cal-pass.org