

## BEYOND COLLEGE RANKINGS

### A VALUE-ADDED APPROACH TO ASSESSING TWO- AND FOUR-YEAR SCHOOLS

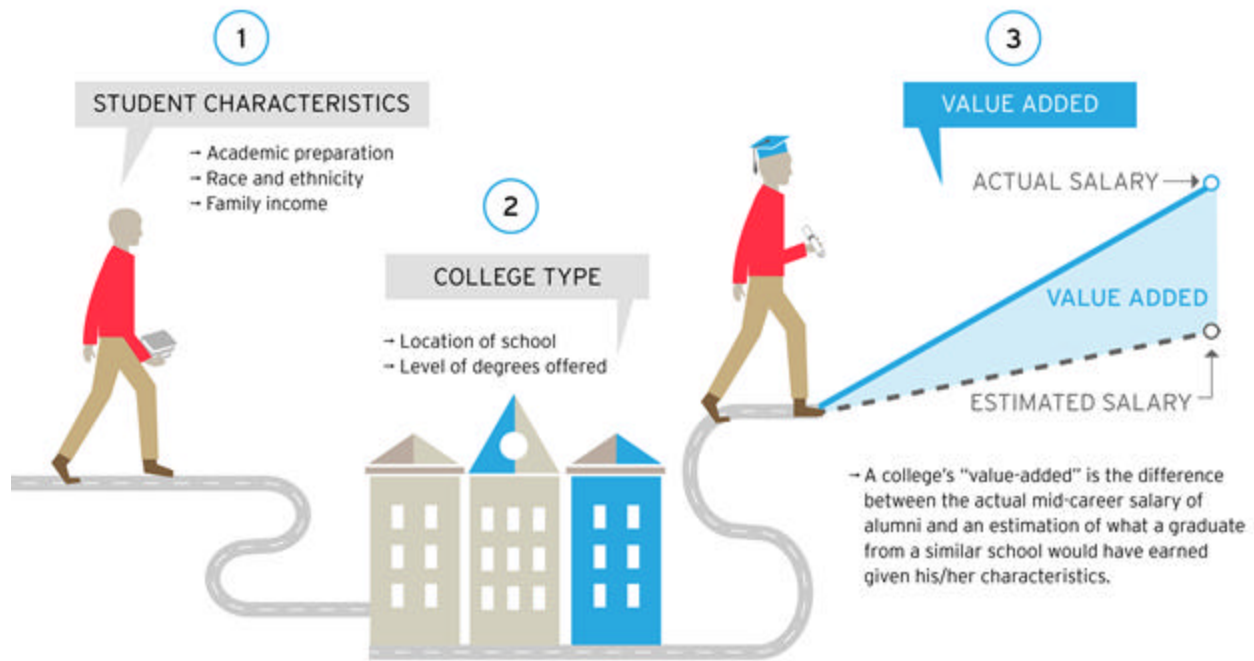
*Editor's Note: This explanation accompanies the Brookings school ranking. The ranking is based on the value added to a mid-career salary by attending this college rather than the weighted national average college.*

The choice of college is among the most important investment decisions individuals and families make, yet people know little about how institutions of higher learning compare along important dimensions of quality. This is especially true for colleges granting credentials of two years or less, which graduate two out of five postsecondary graduates. Moreover, popular rankings from *U.S. News*, *Forbes*, and *Money* focus only on a small fraction of four-year colleges and tend to reward highly selective institutions over those that may contribute the most to student success.

Drawing on government and private sources, this report analyzes college “value-added,” the difference between actual alumni outcomes (like salaries) and the outcomes one would expect given a student’s characteristics and the type of institution. Value-added captures the benefits that accrue from aspects of college quality we can measure, such as graduation rates and the market value of the skills a college teaches, as well as aspects we can’t.

The value-added measures introduced here improve on conventional rankings in several ways. They are available for a much larger number of schools; they focus on the factors that best predict measurable economic outcomes; and they attempt to isolate the effect colleges themselves have on those outcomes, above and beyond what students’ backgrounds would predict.

## HOW TO CALCULATE THE VALUE-ADDED OF A COLLEGE



### Using a variety of private and public data sources, this analysis finds that:

1. Colleges with high value-added in terms of alumni earnings include not only nationally recognized universities such as Cal Tech, MIT, and Stanford, but also less well-known schools such as Rose-Hulman in Indiana, Colgate in upstate New York, and Carleton College in Minnesota. Two-year colleges with high-value added scores include the New Hampshire Technical Institute, Lee College near Houston, and Pearl River Community College in Mississippi.

2. Five college quality factors seem to be key to how well students perform economically in the years after college:

**Curriculum value:** The amount earned by people who hold degrees in a field offered by the college;

**Alumni skills:** The average labor market value of skills listed on resumes;

**STEM orientation:** The share of graduates prepared to work in STEM occupations;

**Completion rates:** The share earning their degrees within four years for a two-year college and eight years for a four-year college;

**Student aid:** The average financial support offered by the institution.

3. Compared to conventional rankings, these value-added measures more accurately predict alumni economic outcomes for a given student.

## For example...

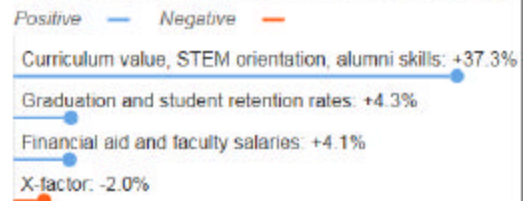
### Data for the Rose-Hulman Institute of Technology

#### Value added with respect to Mid-career earnings of the typical graduate

##### Calculating value-added\*



##### Contributions to value-added from institutional quality

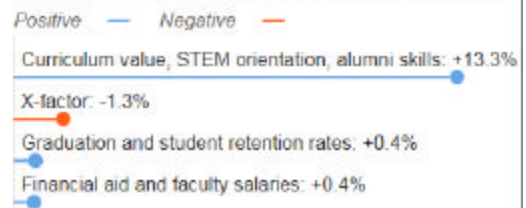


#### Value added with respect to Occupational earnings power of the typical graduate

##### Calculating value-added\*

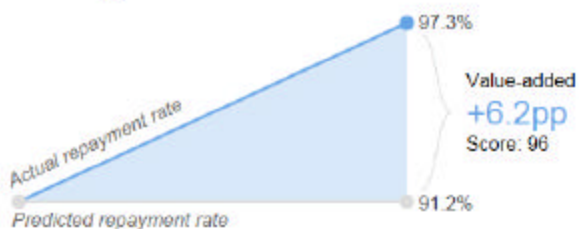


##### Contributions to value-added from institutional quality

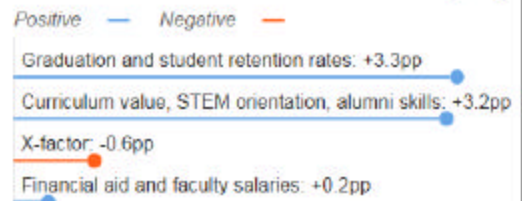


#### Value added with respect to Loan repayment rate of the typical graduate

##### Calculating value-added



##### Contributions to value-added from institutional quality



Note: "pp" is short for "percentage points"

The data contained in this report can provide a starting point for investigating a college's strengths and weaknesses with respect to career preparation. Further due diligence is required by trustees and public officials to assess the direction of the college, its current leadership, its role in the community, and other factors before using these data to guide policy. Likewise,

students need to consider likely economic outcomes against the cost of attendance, scholarship opportunities, the availability of degree programs, and other personal factors.

# Brooking College Rankings: 2-Year Colleges

Ranked based on "Beyond College Rankings" Data Values

College Name	State	Mid-career salary	Occupational earnings power	Loan repayment rate
NHTI-Concord's Community College	NH	1	1	7
Lee College	TX	2	88	194
Pearl River Community College	MS	3	181	119
Pueblo Community College	CO	4	236	196
Texas State Technical College-Waco	TX	5	11	249
San Diego City College	CA	6	28	239
Bakersfield College	CA	7	72	253
Northcentral Technical College	WI	8	42	17
Minnesota State Community and Technical College	MN	9	102	55
Heald College-Concord	CA	10	267	8
Renton Technical College	WA	11	15	75
The Community College of Baltimore County	MD	12	237	86
San Jacinto Community College	TX	13	110	92
Massachusetts Bay Community College	MA	14	146	39
Navarro College	TX	15	263	215
Corning Community College	NY	16	21	250
Community College of Rhode Island	RI	17	150	29
Allegany College of Maryland	MD	18	231	66
Los Angeles Trade Technical College	CA	19	36	260
Lorain County Community College	OH	20	111	115
CUNY Queensborough Community College	NY	21	188	88
Mercer County Community College	NJ	22	97	184
Caldwell Community College and Technical Institute	NC	23	223	206
Indian Hills Community College	IA	24	2	197
Mott Community College	MI	25	78	160
Quincy College	MA	26	201	60
Arapahoe Community College	CO	27	16	124
Greenville Technical College	SC	28	45	89
Prince George's Community College	MD	29	60	49
Phoenix College	AZ	30	5	149
Tacoma Community College	WA	31	58	99
Collin County Community College District	TX	32	142	177
ITT Technical Institute-National City	CA	33	6	222
Union County College	NJ	34	116	28
Nashville State Community College	TN	35	17	191
Gwinnett Technical College	GA	36	22	2
Southeast Technical Institute	SD	37	186	5
Dakota County Technical College	MN	38	169	36
Orange County Community College	NY	39	227	71
Fayetteville Technical Community College	NC	40	242	134

# Brooking College Rankings: 2-Year Colleges

Ranked based on "Beyond College Rankings" Data Values

College Name	State	Mid-career salary	Occupational earnings power	Loan repayment rate
Spokane Community College	WA	41	46	161
Burlington County College	NJ	42	103	30
Rock Valley College	IL	43	124	116
Minneapolis Community and Technical College	MN	44	91	153
York Technical College	SC	45	256	62
Lakeland Community College	OH	46	37	223
De Anza College	CA	47	53	235
Oakton Community College	IL	48	206	125
Springfield Technical Community College	MA	49	18	40
Oklahoma City Community College	OK	50	189	236
Citrus College	CA	51	199	76
Midlands Technical College	SC	52	19	43
James A Rhodes State College	OH	53	193	82
Harper College	IL	54	207	202
Waukesha County Technical College	WI	55	117	80
Owens Community College	OH	56	177	255
Moraine Park Technical College	WI	57	143	18
Houston Community College	TX	58	178	154
CUNY Borough of Manhattan Community College	NY	59	252	105
North Shore Community College	MA	60	144	32
Northampton County Area Community College	PA	61	202	87
Ranken Technical College	MO	62	4	72
Florence-Darlington Technical College	SC	63	183	21
CUNY Kingsborough Community College	NY	64	257	135
Trident Technical College	SC	65	98	31
Hocking College	OH	66	112	241
Henry Ford Community College	MI	67	7	185
Highline Community College	WA	68	59	162
Triton College	IL	69	79	50
Front Range Community College	CO	70	23	131
SUNY Westchester Community College	NY	71	145	63
Heald College-Salinas	CA	72	270	1
Southeast Community College Area	NE	73	12	19
Salt Lake Community College	UT	74	25	64
Mid-State Technical College	WI	75	212	24
Anne Arundel Community College	MD	76	47	186
Baker College of Muskegon	MI	77	264	167
St Cloud Technical and Community College	MN	78	113	20
Harcum College	PA	79	190	51
Kansas City Kansas Community College	KS	80	259	13

## Brooking College Rankings: 2-Year Colleges

Ranked based on "Beyond College Rankings" Data Values

College Name	State	Mid-career salary	Occupational earnings power	Loan repayment rate
Sinclair Community College	OH	81	104	228
Manchester Community College	CT	82	105	9
Zane State College	OH	83	220	217
Tarrant County College District	TX	84	119	192
Tompkins Cortland Community College	NY	85	213	232
Iowa Western Community College	IA	86	214	169
Pikes Peak Community College	CO	87	92	193
Massasoit Community College	MA	88	221	128
Northern Essex Community College	MA	89	125	122
Essex County College	NJ	90	219	261
Luzerne County Community College	PA	91	238	33
Illinois Central College	IL	92	61	247
Hillsborough Community College	FL	93	66	61
Pasco-Hernando Community College	FL	94	235	178
Santa Rosa Junior College	CA	95	74	151
Grayson College	TX	96	232	198
El Camino College-Compton Center	CA	97	261	238
Orange Coast College	CA	98	89	129
Jefferson Community College	NY	99	216	93
Grossmont College	CA	100	120	172
Stark State College	OH	101	147	218
Ivy Tech Community College	IN	102	260	164
Chattanooga State Community College	TN	103	114	229
Saint Paul College	MN	104	253	224
Lone Star College System	TX	105	258	96
Montgomery County Community College	PA	106	158	136
Kalamazoo Valley Community College	MI	107	162	242
Universal Technical Institute of Arizona Inc	AZ	108	265	44
County College of Morris	NJ	109	48	90
Mesa Community College	AZ	110	50	175
Tyler Junior College	TX	111	121	187
Hinds Community College	MS	112	126	139
Waubensee Community College	IL	113	203	170
Amarillo College	TX	114	29	181
Kellogg Community College	MI	115	137	199
Shoreline Community College	WA	116	38	117
Columbus State Community College	OH	117	80	137
Technical Career Institutes	NY	118	224	256
Erie Community College	NY	119	82	207
Nassau Community College	NY	120	159	106



## Brooking College Rankings: 2-Year Colleges

Ranked based on "Beyond College Rankings" Data Values

College Name	State	Mid-career salary	Occupational earnings power	Loan repayment rate
Austin Community College District	TX	121	67	200
Fresno City College	CA	122	127	259
Yakima Valley Community College	WA	123	170	58
Mississippi Gulf Coast Community College	MS	124	93	138
Santa Ana College	CA	125	191	171
Guilford Technical Community College	NC	126	204	203
Mt Hood Community College	OR	127	26	225
Northern Virginia Community College	VA	128	68	65
Elgin Community College	IL	129	198	165
Rose State College	OK	130	31	245
Southwest Tennessee Community College	TN	131	240	262
Tulsa Community College	OK	132	49	243
North Central State College	OH	133	83	208
American River College	CA	134	106	251
Cincinnati State Technical and Community College	OH	135	20	244
George C Wallace State Community College-Dot	AL	136	156	263
Clark State Community College	OH	137	241	211
Milwaukee Area Technical College	WI	138	62	147
Oakland Community College	MI	139	75	130
Del Mar College	TX	140	76	41
Pittsburgh Technical Institute	PA	141	8	78
Central Piedmont Community College	NC	142	94	264
Hudson Valley Community College	NY	143	13	126
ITT Technical Institute-Indianapolis	IN	144	43	252
Columbia State Community College	TN	145	245	97
San Antonio College	TX	146	32	163
Delgado Community College	LA	147	153	34
City College of San Francisco	CA	148	175	248
Red Rocks Community College	CO	149	30	120
Wake Technical Community College	NC	150	69	52
Bergen Community College	NJ	151	194	59
Saddleback College	CA	152	160	108
Western Iowa Tech Community College	IA	153	254	111
Clark College	WA	154	63	156
Cuyahoga Community College District	OH	155	148	212
Gadsden State Community College	AL	156	211	265
Macomb Community College	MI	157	27	121
Lane Community College	OR	158	33	237
Green River Community College	WA	159	149	188
Horry-Georgetown Technical College	SC	160	138	81



## Brooking College Rankings: 2-Year Colleges

Ranked based on "Beyond College Rankings" Data Values

College Name	State	Mid-career salary	Occupational earnings power	Loan repayment rate
Chippewa Valley Technical College	WI	161	184	14
Blackhawk Technical College	WI	162	208	100
Schoolcraft College	MI	163	108	56
Central Texas College	TX	164	209	220
Inver Hills Community College	MN	165	39	70
Cerritos College	CA	166	130	109
Walters State Community College	TN	167	228	140
North Dakota State College of Science	ND	168	3	3
Anoka-Ramsey Community College	MN	169	54	94
Quinsigamond Community College	MA	170	229	73
College of DuPage	IL	171	154	143
Jackson State Community College	TN	172	187	266
Forsyth Technical Community College	NC	173	239	267
Delaware County Community College	PA	174	179	95
Northeast Wisconsin Technical College	WI	175	200	45
Johnson County Community College	KS	176	44	155
Community College of Allegheny County	PA	177	151	67
Wisconsin Indianhead Technical College	WI	178	171	26
Hennepin Technical College	MN	179	14	83
San Jose City College	CA	180	95	233
Normandale Community College	MN	181	139	103
Chaffey College	CA	182	122	35
Brookdale Community College	NJ	183	128	226
Santa Barbara City College	CA	184	195	144
Casper College	WY	185	9	112
Richland College	TX	186	135	216
Lansing Community College	MI	187	55	230
Baker College of Flint	MI	188	161	141
Niagara County Community College	NY	189	192	158
Harrisburg Area Community College-Harrisburg	PA	190	70	145
MiraCosta College	CA	191	115	179
Southwestern Illinois College	IL	192	136	234
Edmonds Community College	WA	193	24	148
San Diego Mesa College	CA	194	56	173
Keiser University-Ft Lauderdale	FL	195	247	123
Portland Community College	OR	196	34	166
South Central College	MN	197	233	48
Finger Lakes Community College	NY	198	99	176
Fox Valley Technical College	WI	199	134	25
Cypress College	CA	200	172	221

## Brooking College Rankings: 2-Year Colleges

Ranked based on "Beyond College Rankings" Data Values

College Name	State	Mid-career salary	Occupational earnings power	Loan repayment rate
Delaware Technical Community College-Stanton/	DE	201	51	127
Suffolk County Community College	NY	202	77	84
Jefferson State Community College	AL	203	243	74
San Joaquin Delta College	CA	204	118	257
Century College	MN	205	163	142
Westmoreland County Community College	PA	206	166	113
Riverside City College	CA	207	85	85
Gateway Technical College	WI	208	164	189
Bristol Community College	MA	209	96	157
Georgia Piedmont Technical College	GA	210	100	268
Moraine Valley Community College	IL	211	217	37
Mt San Antonio College	CA	212	140	101
St Philip's College	TX	213	244	201
Chemeketa Community College	OR	214	71	168
Danville Area Community College	IL	215	123	79
Grand Rapids Community College	MI	216	155	246
Washtenaw Community College	MI	217	131	195
Northeast Community College	NE	218	167	27
Darton State College	GA	219	225	57
Tri-County Technical College	SC	220	226	254
Kirkwood Community College	IA	221	141	152
J Sargeant Reynolds Community College	VA	222	180	146
East Los Angeles College	CA	223	268	68
Montgomery College	MD	224	52	38
Roane State Community College	TN	225	173	159
Lehigh Carbon Community College	PA	226	196	104
John C Calhoun State Community College	AL	227	132	174
Spartanburg Community College	SC	228	255	69
Camden County College	NJ	229	35	180
Des Moines Area Community College	IA	230	57	219
Pima Community College	AZ	231	86	204
George C Wallace State Community College-Har	AL	232	152	214
Wayne Community College	NC	233	210	10
CUNY LaGuardia Community College	NY	234	262	53
Santa Monica College	CA	235	64	46
Georgia Perimeter College	GA	236	185	118
Wyotech-Laramie	WY	237	269	4
Palomar College	CA	238	73	258
Central New Mexico Community College	NM	239	218	209
Alexandria Technical & Community College	MN	240	10	11

## Brooking College Rankings: 2-Year Colleges

Ranked based on "Beyond College Rankings" Data Values

College Name	State	Mid-career salary	Occupational earnings power	Loan repayment rate
Monroe Community College	NY	241	109	182
Alamance Community College	NC	242	176	269
Onondaga Community College	NY	243	81	213
Cape Fear Community College	NC	244	215	77
John Tyler Community College	VA	245	248	107
Delta College	MI	246	101	42
Holyoke Community College	MA	247	165	114
Community College of Philadelphia	PA	248	222	91
Parkland College	IL	249	129	205
Naugatuck Valley Community College	CT	250	249	12
Spokane Falls Community College	WA	251	65	183
Southern Maine Community College	ME	252	168	132
City Colleges of Chicago-Wilbur Wright College	IL	253	250	270
Butler Community College	KS	254	87	47
Fullerton College	CA	255	107	231
College of Lake County	IL	256	234	98
Mount Wachusett Community College	MA	257	133	54
Kilgore College	TX	258	157	240
Pitt Community College	NC	259	246	22
Dutchess Community College	NY	260	40	150
Central Community College	NE	261	174	23
Gaston College	NC	262	230	15
Wayne County Community College District	MI	263	251	227
CUNY Bronx Community College	NY	264	266	16
Sierra College	CA	265	41	210
Everett Community College	WA	266	84	102
Joliet Junior College	IL	267	197	190
Tidewater Community College	VA	268	90	110
Genesee Community College	NY	269	182	133
Lakeshore Technical College	WI	270	205	6

# Brooking College Rankings: 2-Year Colleges

Ranked based on "Beyond College Rankings" Data Values

College Name	State	Mid-career salary	Occupational earnings power	Loan repayment rate
Alamance Community College	NC	242	176	269
Alexandria Technical & Community College	MN	240	10	11
Allegany College of Maryland	MD	18	231	66
Amarillo College	TX	114	29	181
American River College	CA	134	106	251
Anne Arundel Community College	MD	76	47	186
Anoka-Ramsey Community College	MN	169	54	94
Arapahoe Community College	CO	27	16	124
Austin Community College District	TX	121	67	200
Baker College of Flint	MI	188	161	141
Baker College of Muskegon	MI	77	264	167
Bakersfield College	CA	7	72	253
Bergen Community College	NJ	151	194	59
Blackhawk Technical College	WI	162	208	100
Bristol Community College	MA	209	96	157
Brookdale Community College	NJ	183	128	226
Burlington County College	NJ	42	103	30
Butler Community College	KS	254	87	47
Caldwell Community College and Technical Instit	NC	23	223	206
Camden County College	NJ	229	35	180
Cape Fear Community College	NC	244	215	77
Casper College	WY	185	9	112
Central Community College	NE	261	174	23
Central New Mexico Community College	NM	239	218	209
Central Piedmont Community College	NC	142	94	264
Central Texas College	TX	164	209	220
Century College	MN	205	163	142
Cerritos College	CA	166	130	109
Chaffey College	CA	182	122	35
Chattanooga State Community College	TN	103	114	229
Chemeketa Community College	OR	214	71	168
Chippewa Valley Technical College	WI	161	184	14
Cincinnati State Technical and Community College	OH	135	20	244
Citrus College	CA	51	199	76
City College of San Francisco	CA	148	175	248
City Colleges of Chicago-Wilbur Wright College	IL	253	250	270
Clark College	WA	154	63	156
Clark State Community College	OH	137	241	211
College of DuPage	IL	171	154	143
College of Lake County	IL	256	234	98

# Brooking College Rankings: 2-Year Colleges

Ranked based on "Beyond College Rankings" Data Values

College Name	State	Mid-career salary	Occupational earnings power	Loan repayment rate
Collin County Community College District	TX	32	142	177
Columbia State Community College	TN	145	245	97
Columbus State Community College	OH	117	80	137
Community College of Allegheny County	PA	177	151	67
Community College of Philadelphia	PA	248	222	91
Community College of Rhode Island	RI	17	150	29
Corning Community College	NY	16	21	250
County College of Morris	NJ	109	48	90
CUNY Borough of Manhattan Community College	NY	59	252	105
CUNY Bronx Community College	NY	264	266	16
CUNY Kingsborough Community College	NY	64	257	135
CUNY LaGuardia Community College	NY	234	262	53
CUNY Queensborough Community College	NY	21	188	88
Cuyahoga Community College District	OH	155	148	212
Cypress College	CA	200	172	221
Dakota County Technical College	MN	38	169	36
Danville Area Community College	IL	215	123	79
Darton State College	GA	219	225	57
De Anza College	CA	47	53	235
Del Mar College	TX	140	76	41
Delaware County Community College	PA	174	179	95
Delaware Technical Community College-Stanton/	DE	201	51	127
Delgado Community College	LA	147	153	34
Delta College	MI	246	101	42
Des Moines Area Community College	IA	230	57	219
Dutchess Community College	NY	260	40	150
East Los Angeles College	CA	223	268	68
Edmonds Community College	WA	193	24	148
El Camino College-Compton Center	CA	97	261	238
Elgin Community College	IL	129	198	165
Erie Community College	NY	119	82	207
Essex County College	NJ	90	219	261
Everett Community College	WA	266	84	102
Fayetteville Technical Community College	NC	40	242	134
Finger Lakes Community College	NY	198	99	176
Florence-Darlington Technical College	SC	63	183	21
Forsyth Technical Community College	NC	173	239	267
Fox Valley Technical College	WI	199	134	25
Fresno City College	CA	122	127	259
Front Range Community College	CO	70	23	131

## Brooking College Rankings: 2-Year Colleges

Ranked based on "Beyond College Rankings" Data Values

College Name	State	Mid-career salary	Occupational earnings power	Loan repayment rate
Fullerton College	CA	255	107	231
Gadsden State Community College	AL	156	211	265
Gaston College	NC	262	230	15
Gateway Technical College	WI	208	164	189
Genesee Community College	NY	269	182	133
George C Wallace State Community College-Dot	AL	136	156	263
George C Wallace State Community College-Har	AL	232	152	214
Georgia Perimeter College	GA	236	185	118
Georgia Piedmont Technical College	GA	210	100	268
Grand Rapids Community College	MI	216	155	246
Grayson College	TX	96	232	198
Green River Community College	WA	159	149	188
Greenville Technical College	SC	28	45	89
Grossmont College	CA	100	120	172
Guilford Technical Community College	NC	126	204	203
Gwinnett Technical College	GA	36	22	2
Harcum College	PA	79	190	51
Harper College	IL	54	207	202
Harrisburg Area Community College-Harrisburg	PA	190	70	145
Heald College-Concord	CA	10	267	8
Heald College-Salinas	CA	72	270	1
Hennepin Technical College	MN	179	14	83
Henry Ford Community College	MI	67	7	185
Highline Community College	WA	68	59	162
Hillsborough Community College	FL	93	66	61
Hinds Community College	MS	112	126	139
Hocking College	OH	66	112	241
Holyoke Community College	MA	247	165	114
Horry-Georgetown Technical College	SC	160	138	81
Houston Community College	TX	58	178	154
Hudson Valley Community College	NY	143	13	126
Illinois Central College	IL	92	61	247
Indian Hills Community College	IA	24	2	197
Inver Hills Community College	MN	165	39	70
Iowa Western Community College	IA	86	214	169
ITT Technical Institute-Indianapolis	IN	144	43	252
ITT Technical Institute-National City	CA	33	6	222
Ivy Tech Community College	IN	102	260	164
J Sargeant Reynolds Community College	VA	222	180	146
Jackson State Community College	TN	172	187	266

## Brooking College Rankings: 2-Year Colleges

Ranked based on "Beyond College Rankings" Data Values

College Name	State	Mid-career salary	Occupational earnings power	Loan repayment rate
James A Rhodes State College	OH	53	193	82
Jefferson Community College	NY	99	216	93
Jefferson State Community College	AL	203	243	74
John C Calhoun State Community College	AL	227	132	174
John Tyler Community College	VA	245	248	107
Johnson County Community College	KS	176	44	155
Joliet Junior College	IL	267	197	190
Kalamazoo Valley Community College	MI	107	162	242
Kansas City Kansas Community College	KS	80	259	13
Keiser University-Ft Lauderdale	FL	195	247	123
Kellogg Community College	MI	115	137	199
Kilgore College	TX	258	157	240
Kirkwood Community College	IA	221	141	152
Lakeland Community College	OH	46	37	223
Lakeshore Technical College	WI	270	205	6
Lane Community College	OR	158	33	237
Lansing Community College	MI	187	55	230
Lee College	TX	2	88	194
Lehigh Carbon Community College	PA	226	196	104
Lone Star College System	TX	105	258	96
Lorain County Community College	OH	20	111	115
Los Angeles Trade Technical College	CA	19	36	260
Luzerne County Community College	PA	91	238	33
Macomb Community College	MI	157	27	121
Manchester Community College	CT	82	105	9
Massachusetts Bay Community College	MA	14	146	39
Massasoit Community College	MA	88	221	128
Mercer County Community College	NJ	22	97	184
Mesa Community College	AZ	110	50	175
Midlands Technical College	SC	52	19	43
Mid-State Technical College	WI	75	212	24
Milwaukee Area Technical College	WI	138	62	147
Minneapolis Community and Technical College	MN	44	91	153
Minnesota State Community and Technical College	MN	9	102	55
MiraCosta College	CA	191	115	179
Mississippi Gulf Coast Community College	MS	124	93	138
Monroe Community College	NY	241	109	182
Montgomery College	MD	224	52	38
Montgomery County Community College	PA	106	158	136
Moraine Park Technical College	WI	57	143	18



## Brooking College Rankings: 2-Year Colleges

Ranked based on "Beyond College Rankings" Data Values

College Name	State	Mid-career salary	Occupational earnings power	Loan repayment rate
Moraine Valley Community College	IL	211	217	37
Mott Community College	MI	25	78	160
Mount Wachusett Community College	MA	257	133	54
Mt Hood Community College	OR	127	26	225
Mt San Antonio College	CA	212	140	101
Nashville State Community College	TN	35	17	191
Nassau Community College	NY	120	159	106
Naugatuck Valley Community College	CT	250	249	12
Navarro College	TX	15	263	215
NHTI-Concord's Community College	NH	1	1	7
Niagara County Community College	NY	189	192	158
Normandale Community College	MN	181	139	103
North Central State College	OH	133	83	208
North Dakota State College of Science	ND	168	3	3
North Shore Community College	MA	60	144	32
Northampton County Area Community College	PA	61	202	87
Northcentral Technical College	WI	8	42	17
Northeast Community College	NE	218	167	27
Northeast Wisconsin Technical College	WI	175	200	45
Northern Essex Community College	MA	89	125	122
Northern Virginia Community College	VA	128	68	65
Oakland Community College	MI	139	75	130
Oakton Community College	IL	48	206	125
Oklahoma City Community College	OK	50	189	236
Onondaga Community College	NY	243	81	213
Orange Coast College	CA	98	89	129
Orange County Community College	NY	39	227	71
Owens Community College	OH	56	177	255
Palomar College	CA	238	73	258
Parkland College	IL	249	129	205
Pasco-Hernando Community College	FL	94	235	178
Pearl River Community College	MS	3	181	119
Phoenix College	AZ	30	5	149
Pikes Peak Community College	CO	87	92	193
Pima Community College	AZ	231	86	204
Pitt Community College	NC	259	246	22
Pittsburgh Technical Institute	PA	141	8	78
Portland Community College	OR	196	34	166
Prince George's Community College	MD	29	60	49
Pueblo Community College	CO	4	236	196

## Brooking College Rankings: 2-Year Colleges

Ranked based on "Beyond College Rankings" Data Values

College Name	State	Mid-career salary	Occupational earnings power	Loan repayment rate
Quincy College	MA	26	201	60
Quinsigamond Community College	MA	170	229	73
Ranken Technical College	MO	62	4	72
Red Rocks Community College	CO	149	30	120
Renton Technical College	WA	11	15	75
Richland College	TX	186	135	216
Riverside City College	CA	207	85	85
Roane State Community College	TN	225	173	159
Rock Valley College	IL	43	124	116
Rose State College	OK	130	31	245
Saddleback College	CA	152	160	108
Saint Paul College	MN	104	253	224
Salt Lake Community College	UT	74	25	64
San Antonio College	TX	146	32	163
San Diego City College	CA	6	28	239
San Diego Mesa College	CA	194	56	173
San Jacinto Community College	TX	13	110	92
San Joaquin Delta College	CA	204	118	257
San Jose City College	CA	180	95	233
Santa Ana College	CA	125	191	171
Santa Barbara City College	CA	184	195	144
Santa Monica College	CA	235	64	46
Santa Rosa Junior College	CA	95	74	151
Schoolcraft College	MI	163	108	56
Shoreline Community College	WA	116	38	117
Sierra College	CA	265	41	210
Sinclair Community College	OH	81	104	228
South Central College	MN	197	233	48
Southeast Community College Area	NE	73	12	19
Southeast Technical Institute	SD	37	186	5
Southern Maine Community College	ME	252	168	132
Southwest Tennessee Community College	TN	131	240	262
Southwestern Illinois College	IL	192	136	234
Spartanburg Community College	SC	228	255	69
Spokane Community College	WA	41	46	161
Spokane Falls Community College	WA	251	65	183
Springfield Technical Community College	MA	49	18	40
St Cloud Technical and Community College	MN	78	113	20
St Philip's College	TX	213	244	201
Stark State College	OH	101	147	218

## Brooking College Rankings: 2-Year Colleges

Ranked based on "Beyond College Rankings" Data Values

College Name	State	Mid-career salary	Occupational earnings power	Loan repayment rate
Suffolk County Community College	NY	202	77	84
SUNY Westchester Community College	NY	71	145	63
Tacoma Community College	WA	31	58	99
Tarrant County College District	TX	84	119	192
Technical Career Institutes	NY	118	224	256
Texas State Technical College-Waco	TX	5	11	249
The Community College of Baltimore County	MD	12	237	86
Tidewater Community College	VA	268	90	110
Tompkins Cortland Community College	NY	85	213	232
Tri-County Technical College	SC	220	226	254
Trident Technical College	SC	65	98	31
Triton College	IL	69	79	50
Tulsa Community College	OK	132	49	243
Tyler Junior College	TX	111	121	187
Union County College	NJ	34	116	28
Universal Technical Institute of Arizona Inc	AZ	108	265	44
Wake Technical Community College	NC	150	69	52
Walters State Community College	TN	167	228	140
Washtenaw Community College	MI	217	131	195
Waubonsee Community College	IL	113	203	170
Waukesha County Technical College	WI	55	117	80
Wayne Community College	NC	233	210	10
Wayne County Community College District	MI	263	251	227
Western Iowa Tech Community College	IA	153	254	111
Westmoreland County Community College	PA	206	166	113
Wisconsin Indianhead Technical College	WI	178	171	26
Wyotech-Laramie	WY	237	269	4
Yakima Valley Community College	WA	123	170	58
York Technical College	SC	45	256	62
Zane State College	OH	83	220	217

## Brooking College Rankings: 2-Year Colleges

Ranked based on "Beyond College Rankings" Data Values

California colleges only

College Name	State	Mid-career salary	Occupational earnings power	Loan repayment rate
San Diego City College	CA	6	28	239
Bakersfield College	CA	7	72	253
Heald College-Concord	CA	10	267	8
Los Angeles Trade Technical College	CA	19	36	260
ITT Technical Institute-National City	CA	33	6	222
De Anza College	CA	47	53	235
Citrus College	CA	51	199	76
Heald College-Salinas	CA	72	270	1
Santa Rosa Junior College	CA	95	74	151
El Camino College-Compton Center	CA	97	261	238
Orange Coast College	CA	98	89	129
Grossmont College	CA	100	120	172
Fresno City College	CA	122	127	259
Santa Ana College	CA	125	191	171
American River College	CA	134	106	251
City College of San Francisco	CA	148	175	248
Saddleback College	CA	152	160	108
Cerritos College	CA	166	130	109
San Jose City College	CA	180	95	233
Chaffey College	CA	182	122	35
Santa Barbara City College	CA	184	195	144
MiraCosta College	CA	191	115	179
San Diego Mesa College	CA	194	56	173
Cypress College	CA	200	172	221
San Joaquin Delta College	CA	204	118	257
Riverside City College	CA	207	85	85
Mt San Antonio College	CA	212	140	101
East Los Angeles College	CA	223	268	68
Santa Monica College	CA	235	64	46
Palomar College	CA	238	73	258
Fullerton College	CA	255	107	231
Sierra College	CA	265	41	210

Under embargo until April 29, 2015, at 12:01 a.m. Eastern Time

Contact: Allison Courtin, [acourtin@brookings.edu](mailto:acourtin@brookings.edu), 202-238-3556  
Anthony Fiano, [afiano@brookings.edu](mailto:afiano@brookings.edu), 202-238-3113

## Value-added rankings measure economic impact of college

### ***Brookings releases report evaluating two- and four-year colleges' contributions to alumni economic outcomes***

Washington, D.C. — New data and analysis of two- and four-year schools released today by the Brookings Metropolitan Policy Program provides fresh insight into how well colleges prepare students for high-paying careers.

The report, “Beyond College Rankings: A Value-Added Approach to Assessing Two and Four-Year Schools,” by Brookings Fellow Jonathan Rothwell and Senior Research Assistant Siddharth Kulkarni, fills a large information gap in higher education of relevance to state education officials, college administrators, and workforce development leaders. It also offers a new tool to help prospective college students think about where to apply and where to attend.

The report is the first to develop measures of “value added” for a broad array of two- and four-year colleges. To do so, it analyzes data on economic outcomes for graduates of these institutions, adjusting them for the characteristics of their students at the time they are admitted, and other factors. The resulting measures capture the contributions that the colleges themselves make to their graduates’ eventual economic success.

Using a blend of government and private data (from LinkedIn and Payscale), the report’s analysis shows:

- A college’s mix of majors and the skills it provides students are highly predictive of economic outcomes for its graduates. Colleges where many students pursue degrees in fields like engineering, healthcare, computer science, and business see higher earnings among their alumni.
- Colleges can boost economic outcomes for students by encouraging higher completion rates and offering generous financial aid.
- Four-year colleges like Caltech (California), Colgate (New York), MIT (Massachusetts), the Rose-Hulman Institute (Indiana), and Carleton College (Minnesota) add the most value to student earnings potential. At the two-year level, top performers include NHTI Concord (New Hampshire), Lee College (Texas), and Pearl River (Mississippi). Value-added is defined as the difference between a college’s predicted and actual student economic outcomes.

“These college-specific data can be used to learn about, evaluate, and improve college performance,” said Rothwell. “Colleges serve very diverse populations. The advantage of measuring value-added is that it adjusts a school’s rankings based on the type of college and the characteristics of its student body.”

Compared to popular college rankings, the value-added method focuses on how well colleges contribute to student economic success, rather than simply their ability to attract top students. The new Brookings value-added database provides:

- Value-added scores on at least one economic outcome for as many as 4,400 postsecondary institutions, compared to the 600 or fewer ranked by non-academic publications.
- At least two measures of college quality for over 7,000 colleges, allowing prospective students to readily compare four- and two-year colleges on the factors predictive of success.
- More accurate predictors of college performance relative to popular non-academic rankings.

While imperfect, these value-added measures improve on conventional rankings and fill a demand for greater transparency and accountability in higher education. This report identifies those factors that colleges can influence to improve alumni economic outcomes. It also helps close the information gap for the huge number of community colleges and non-selective colleges that conventional rankings fail to acknowledge.

“College is a major investment for individuals and the taxpayers who subsidize it,” said Rothwell. “So, the public has a huge stake in promoting quality. No ratings system can capture everything about a college that matters, but these data can shed some light on how colleges compare in their contributions to student success and, hopefully, spark further research with even better data.”

*The **Metropolitan Policy Program** at Brookings provides decision-makers with cutting-edge research and policy ideas for improving the health and prosperity of metropolitan areas. To learn more, please visit: [www.brookings.edu/metro](http://www.brookings.edu/metro). Follow us on Twitter at [www.twitter.com/brookingsmetro](http://www.twitter.com/brookingsmetro).*

###